



Kikuyugrass

“The poa of warm-season grasses”

Larry Stowell, Ph.D.

www.paceturf.org

@paceturf on Twitter



Kikuyugrass



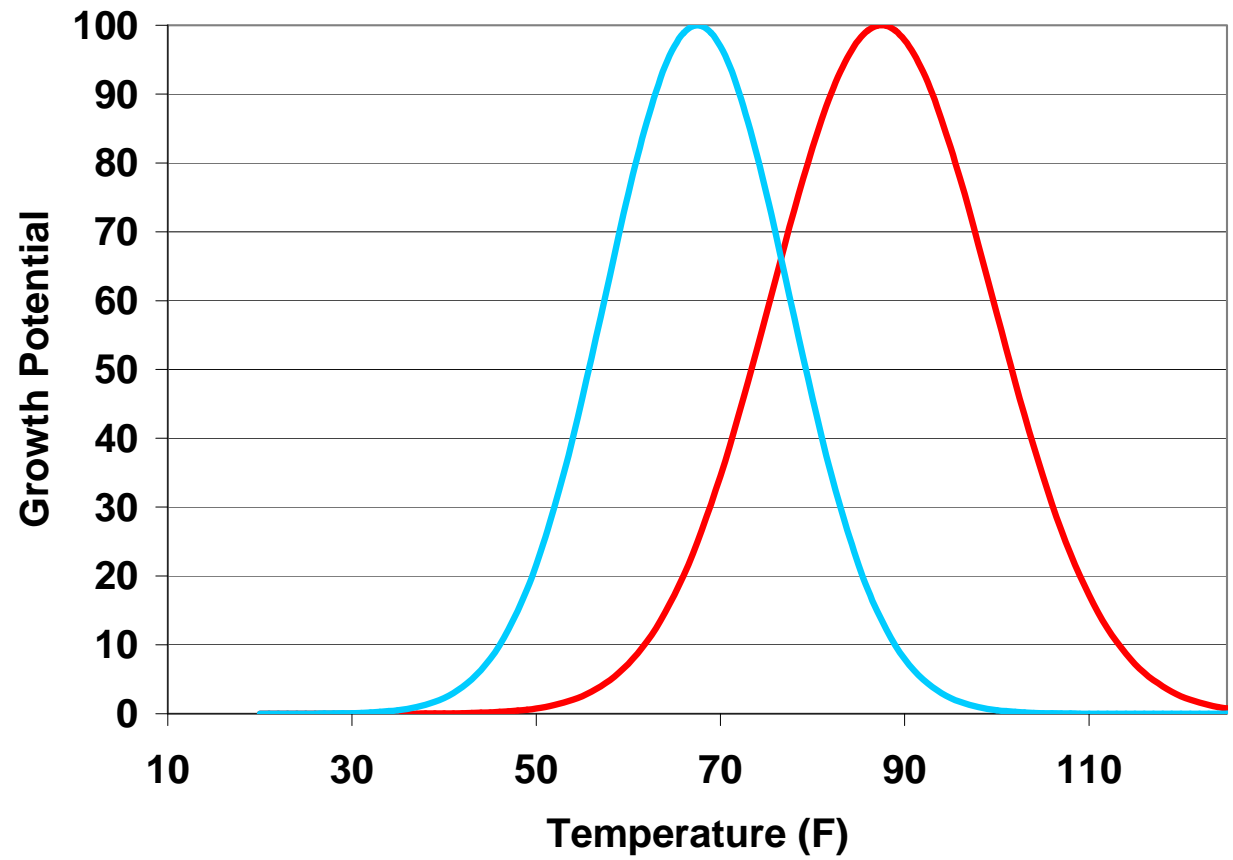
The wild ones



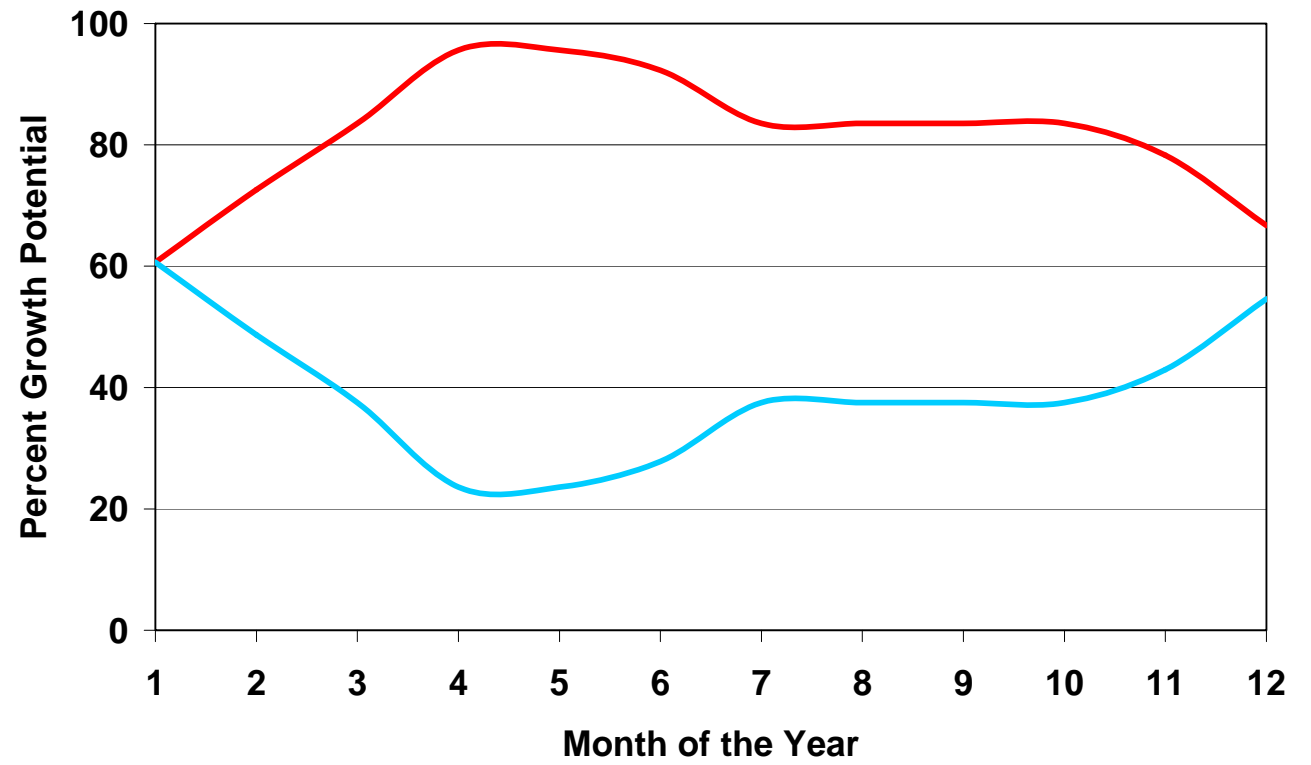
Kikuyugrass

- Climate where kikuyugrass is grown
- Most destructive diseases
- Scalping
- Troublesome insects

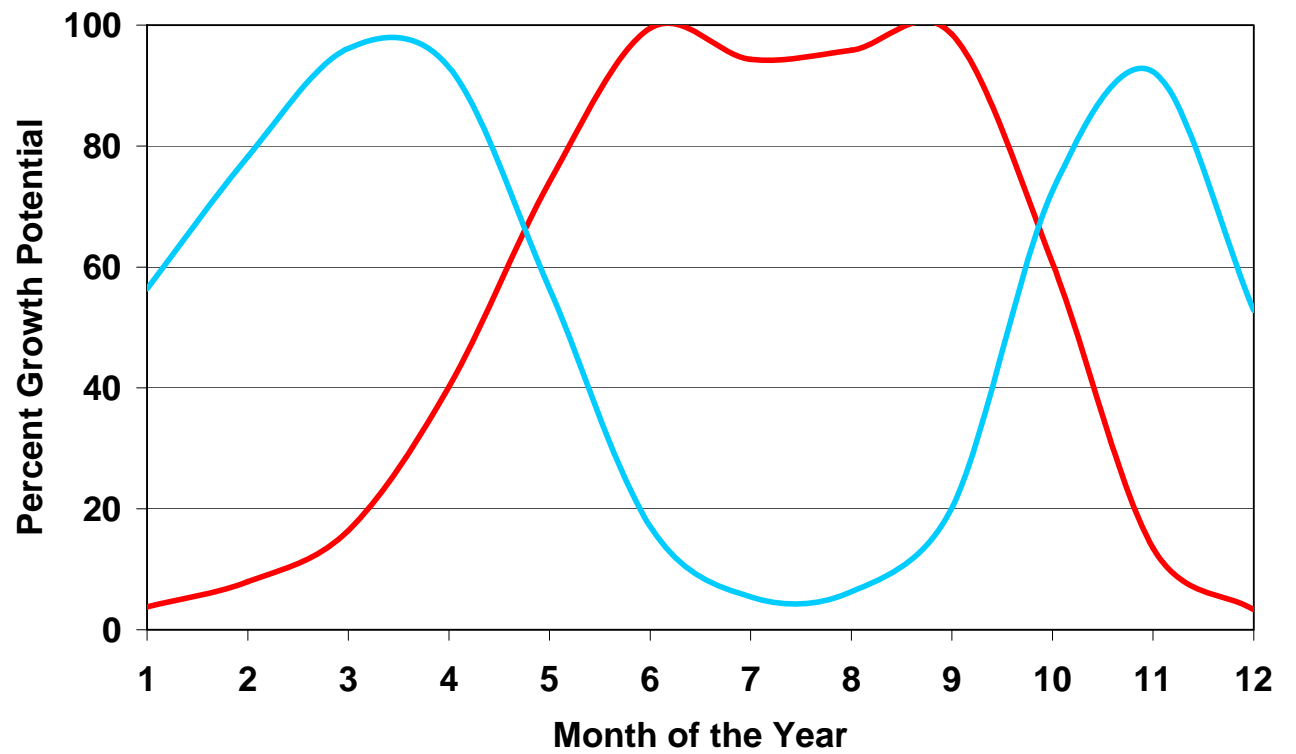
**Growth
Potential
(GP)**



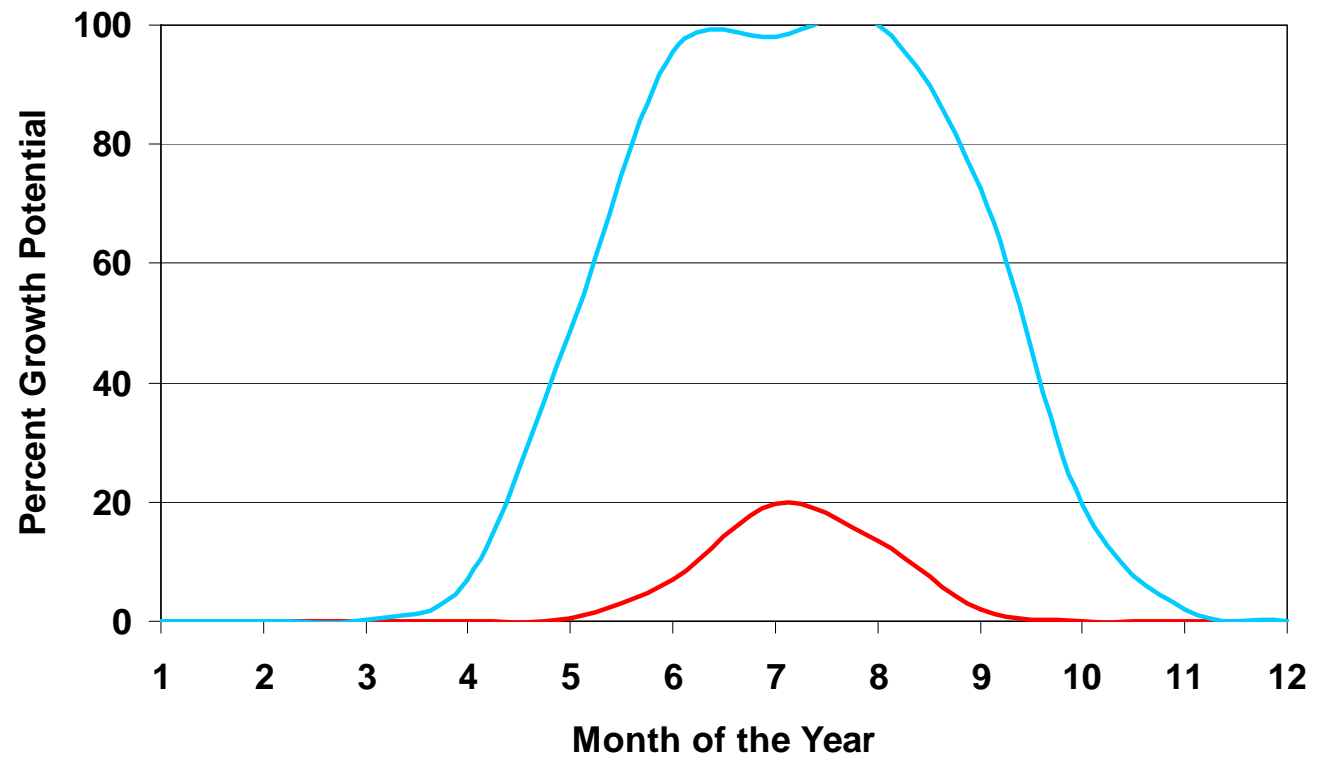
**Tropical
(Manila,
Philippines)**



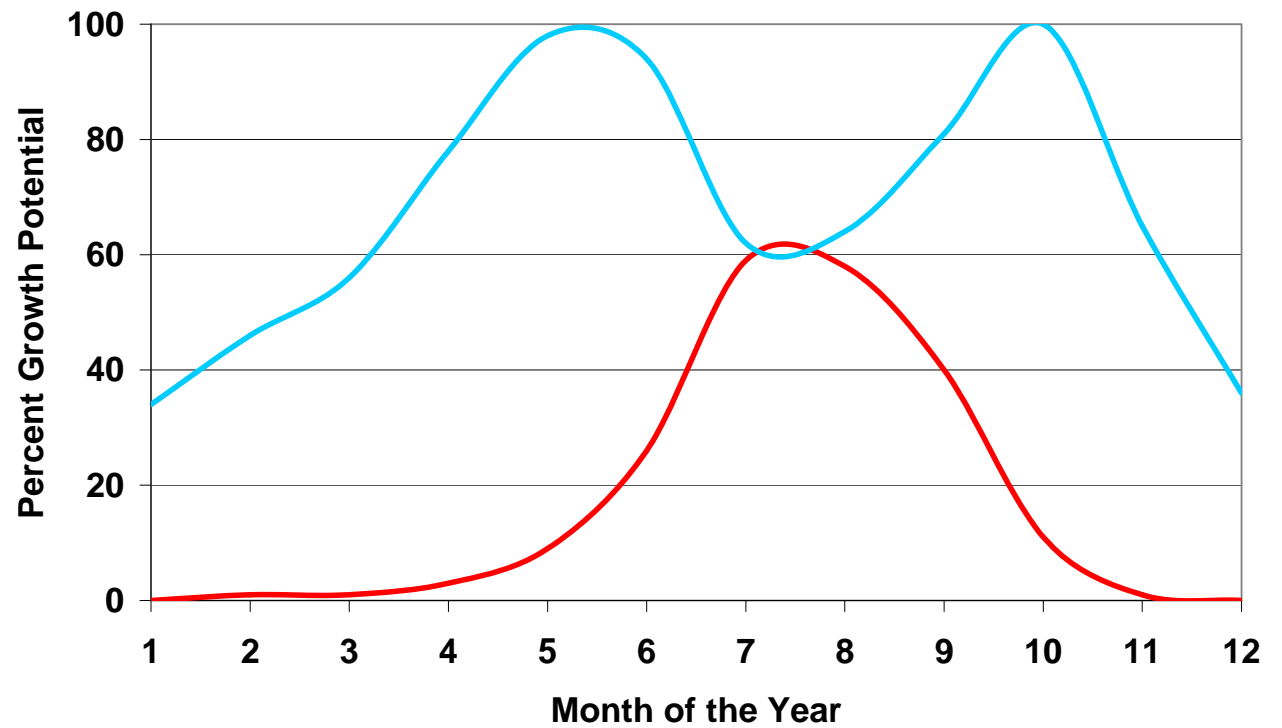
**Inland Desert
California
(Cathedral
City)**



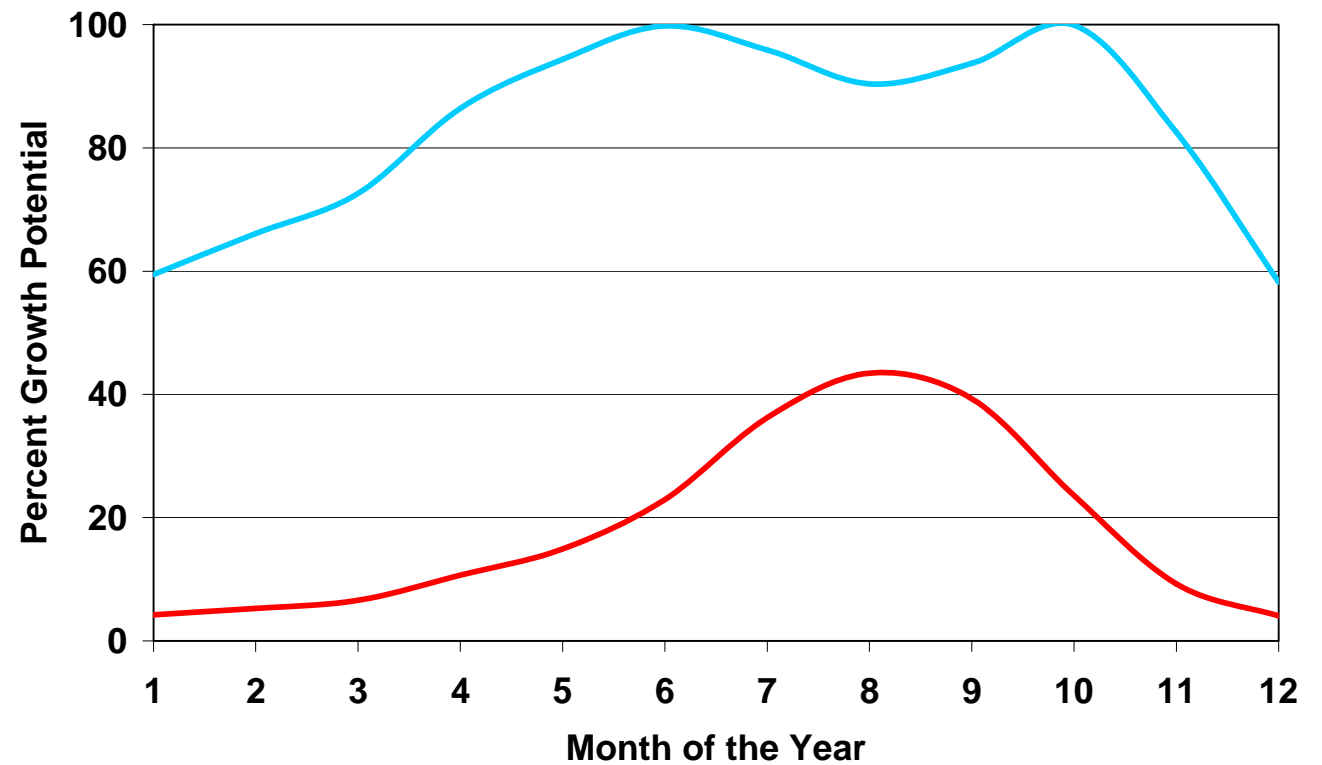
**Cool season
(Worcester
, MA)**



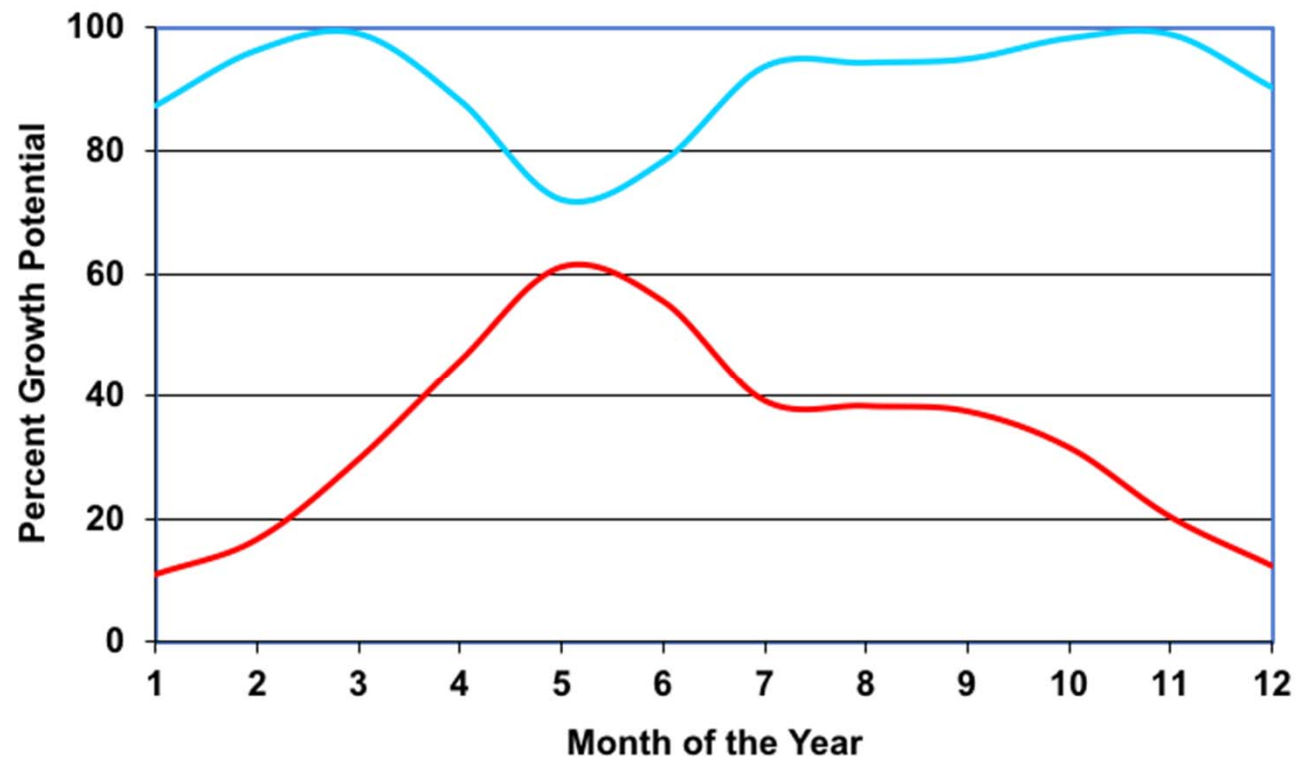
**Inland
Southern
California
(Riverside)**



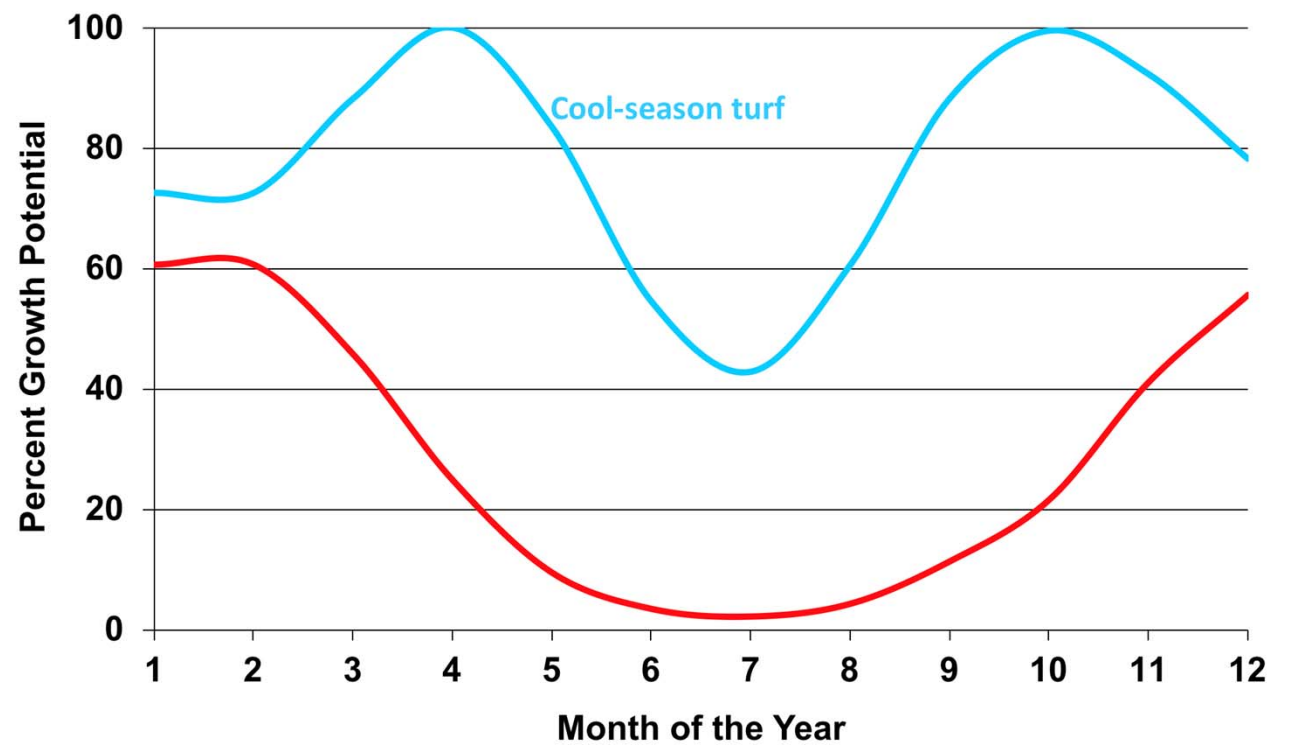
**Coastal
California
Climate
(San Diego)**



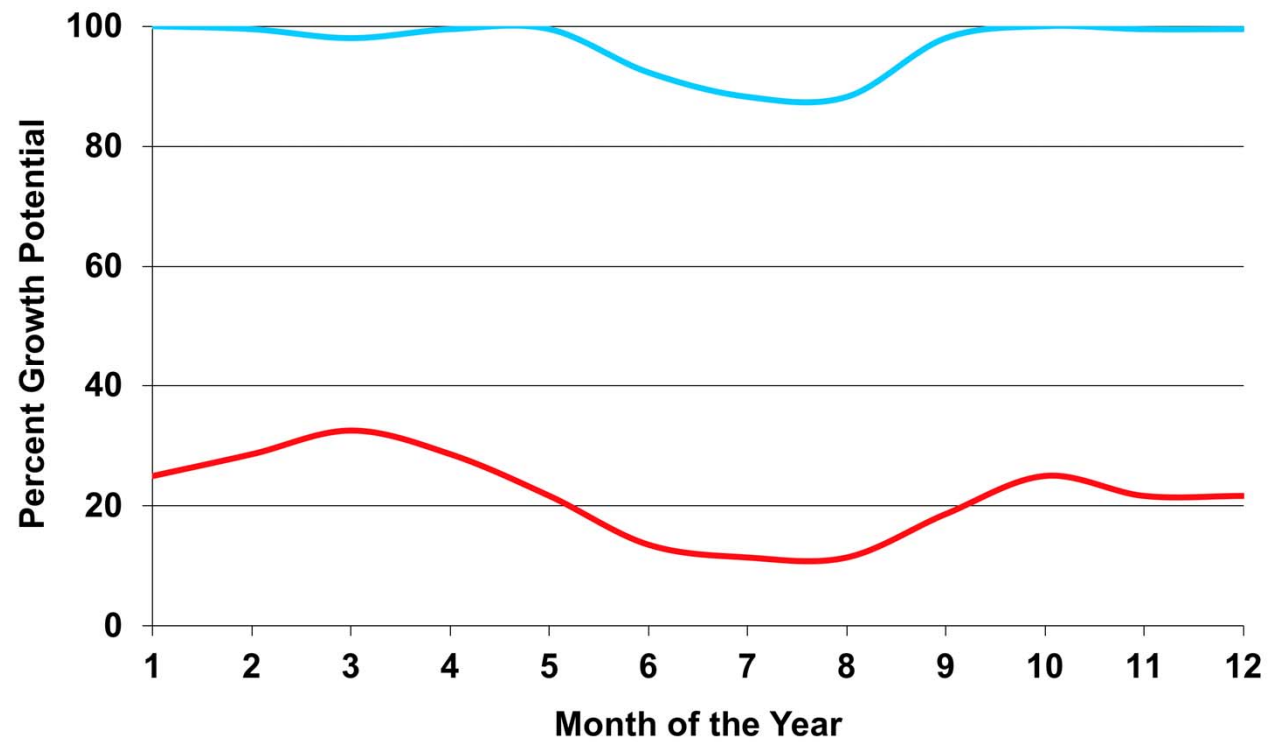
**Guadalajara,
Mexico 5,085
ft elevation**



**Grafton,
New South
Wales,
Australia**



**Nairobi,
Kenya
Origin of
kikuyugrass**



**Solar
Radiation
&
Shade**

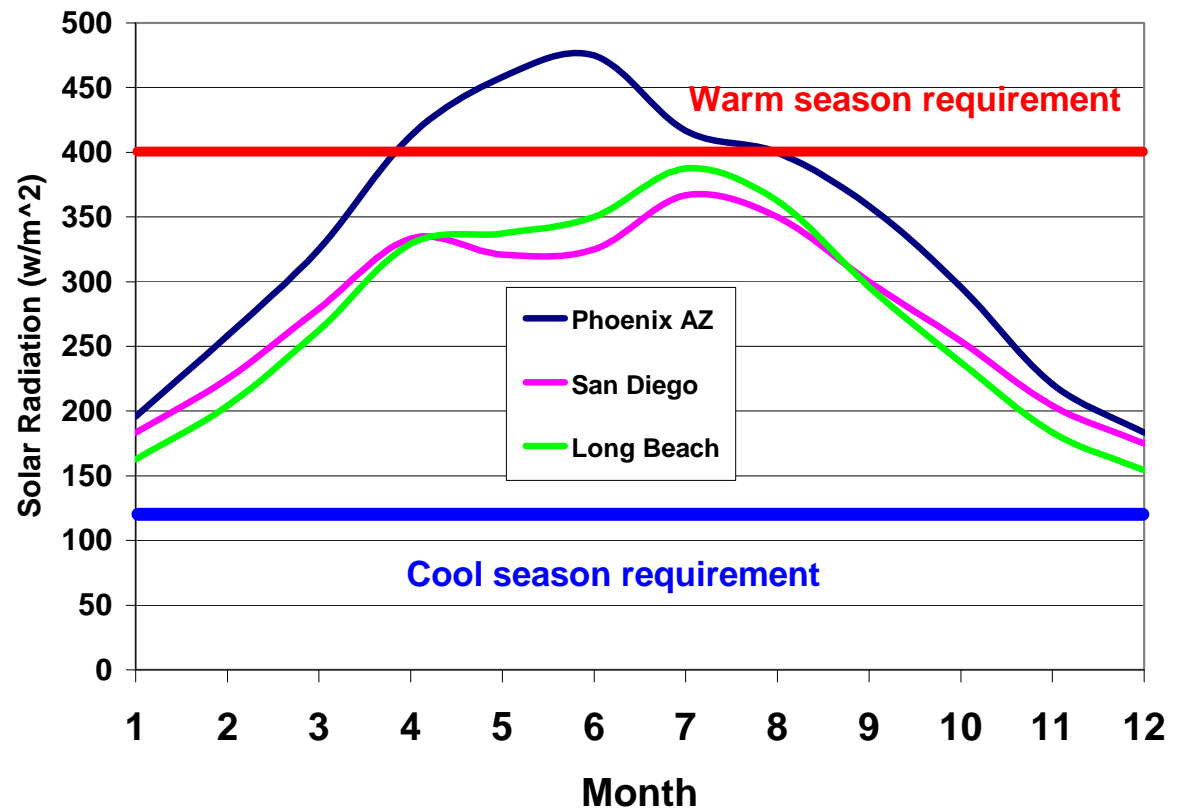


Optimum solar radiation

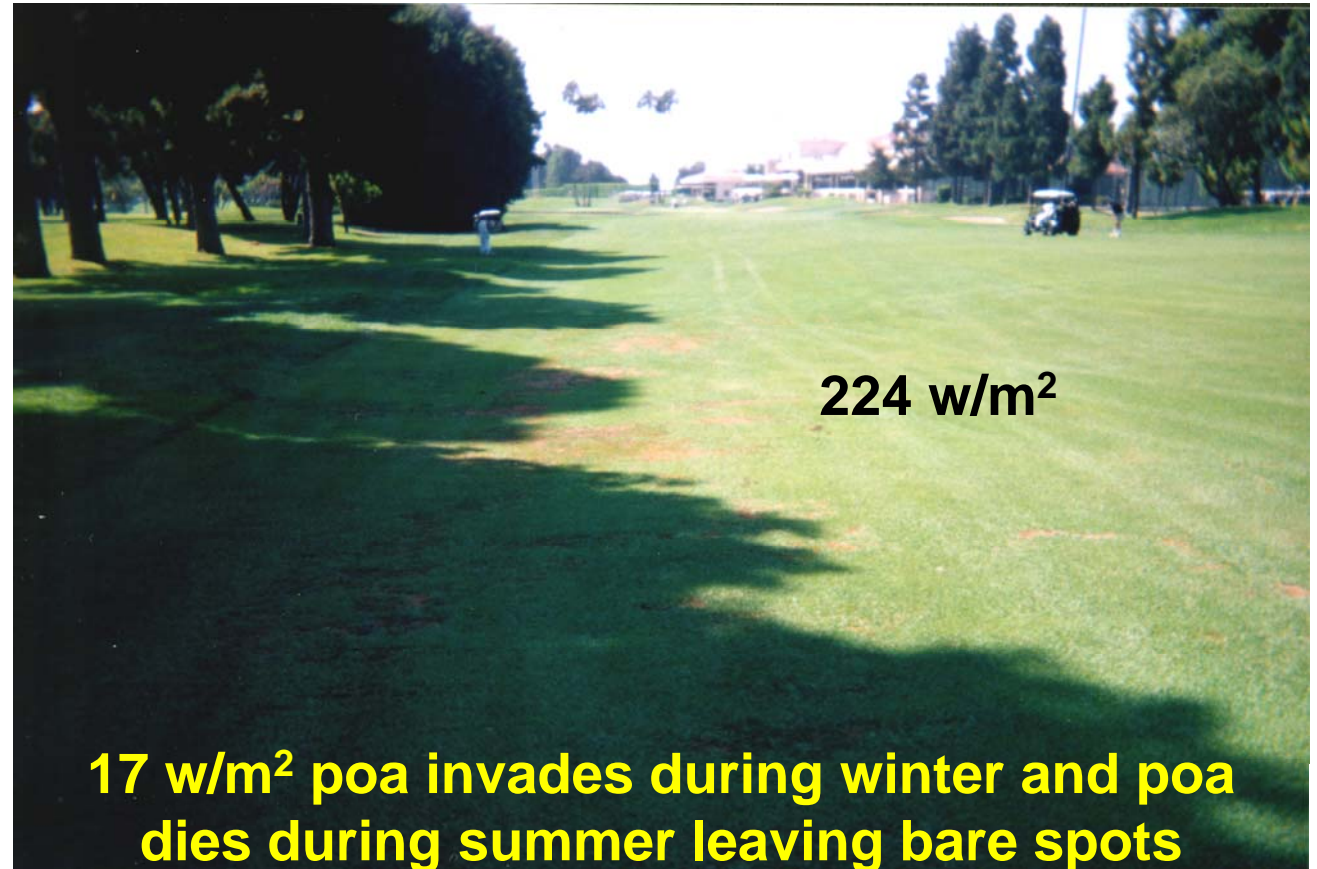
- Cool-season (C3) grasses
116 – 233 w/m²/da
10 – 20 moles/m²/da
- Warm-season (C4) grasses
390 – 485 w/m²/da
30 – 40 moles/m²/da

Solar
Radiation
 w/m^2

Average Monthly Solar Radiation



Shade



Kikuyugrass

- Climate where kikuyugrass is grown in California
- Most destructive diseases
- Scalping
- Troublesome insects

Kikuyugrass Diseases

- Gray leaf spot
- Leaf spot
- Brown/large patch
- Decline

**Gray leaf
spot**



Gray leaf
spot
Pyricularia
spp.



Gray leaf
spot
Pyricularia
spp.



Gray leaf
spot
Pyricularia
spp.



Gray leaf
spot
Pyricularia
spp.



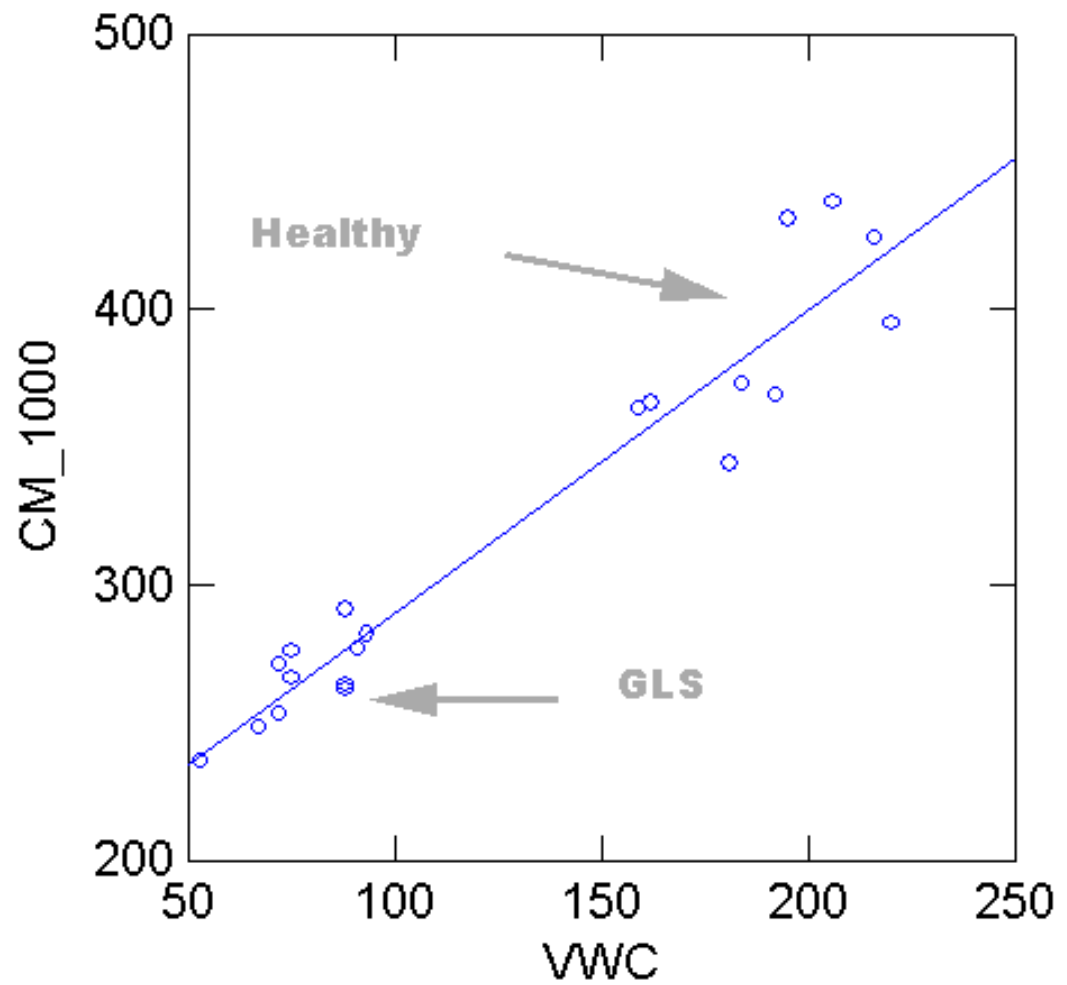
**Gray Leaf
Spot
Pyricularia
spp.**



**Gray Leaf
Spot
Pyricularia
spp.**



**Gray Leaf
Spot
Pyricularia
spp.**



Gray Leaf Spot Management

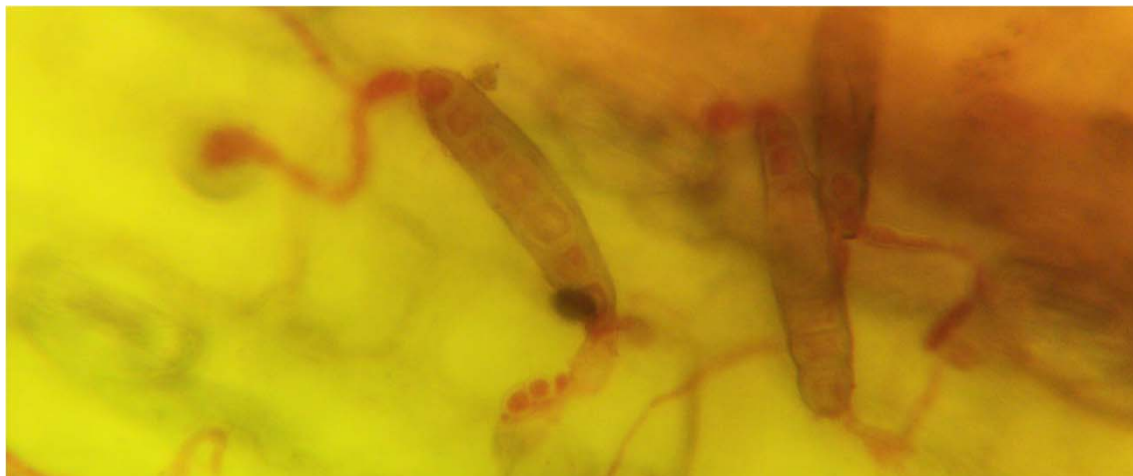
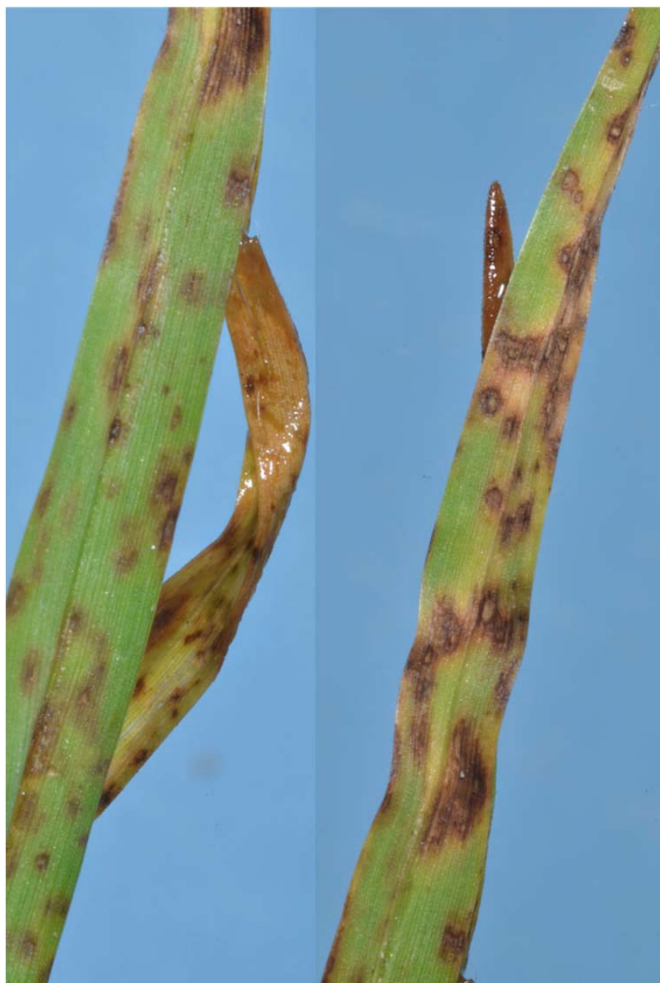
- Mostly warm summer weather conditions. Drought seems to increase severity (Max T (F) + Min RH% > 140)
- Rotate between DMI and thiophanate-methyl plus chlorothalonil (watch chlorothalonil label limits)
- Low rates on 14 day interval seem to be better than full rates on 28 day interval
- Widespread resistance to QoI fungicides in California

Kikuyugrass Diseases

- Gray leaf spot
- Leaf spot
- Brown/large patch
- Decline

Leaf Spot
Bipolaris
spp.





Leaf Spot

Leaf spot and crown rot management

- Low light and moderate temperature disease
- Normally can grow out of the problem when weather improves
- In coastal areas, treatment may be needed to prevent continued decline of the kikuyugrass late summer – before cool fall weather
- Chipco 26GT, Curalan, Disarm, Fore, Medallion, Velista, Heritage, Insignia, Interface Stressgard, Lexicon

Kikuyugrass Diseases

- Gray leaf spot
- Leaf spot
- Brown/large patch
- Decline

Large patch
brown patch
Rhizoctonia
spp.



Large patch
brown
patch
Rhizoctonia
spp.



Large patch
brown
patch
Rhizoctonia
spp.



Large patch/brown patch management

- Prevention is the key where the disease is prevalent
- Cool fall weather, rainfall, low light results in slow growth of kikuyugrass and limited recovery
- Heritage, Insignia, Prostar, Medallion, Fame, Xzemplar, Affirm, Briskway, Headway, Honor Intrinsic, Encave, Fame C, Fame+T, Lexicon

Kikuyugrass Diseases

- Gray leaf spot
- Leaf spot
- Brown/large patch
- Decline

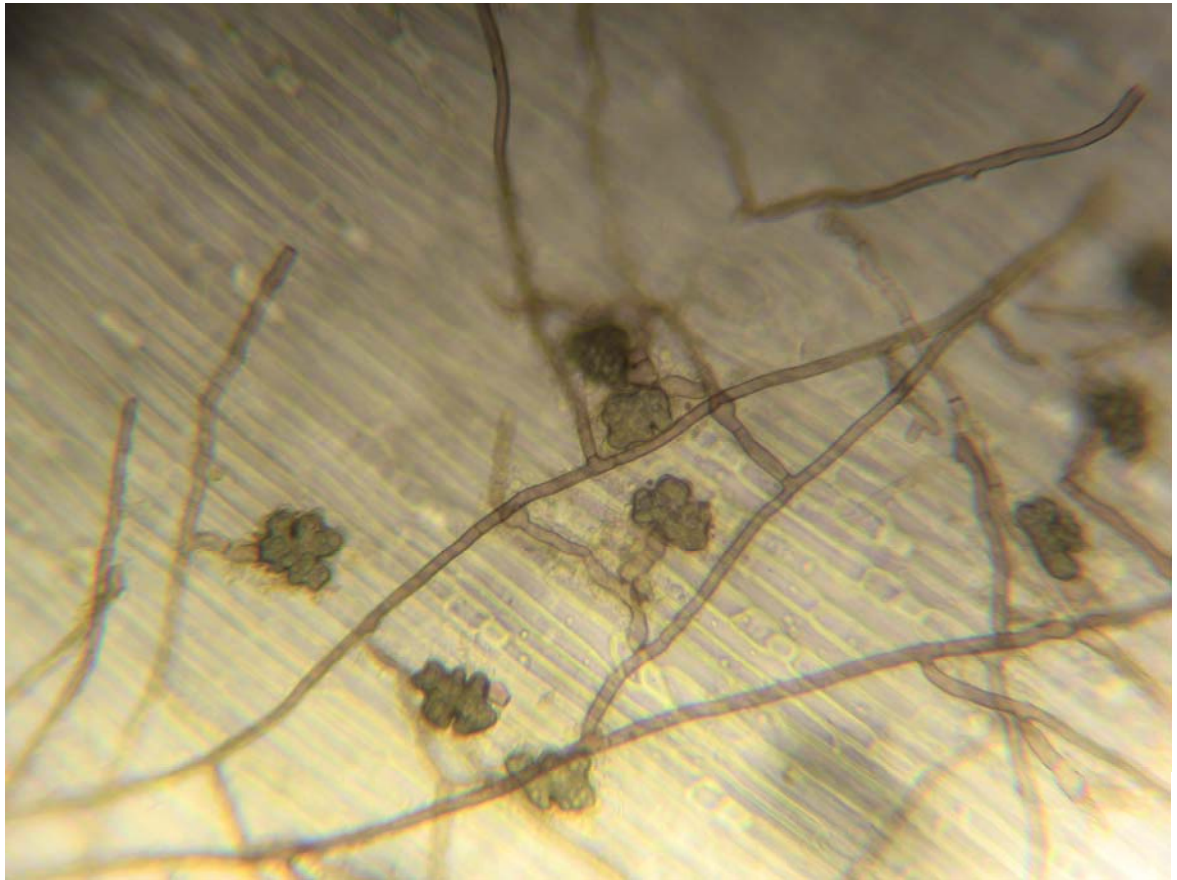
**Decline
Gaeumannomyces spp.**



Decline
Gaeumannomyces spp.



Decline
Gaeumannomyces spp.



Decline management

- Prevention is the key where the disease is prevalent
- Damage begins when soil temperature exceed 65 F (18 C)
- Maintain adequate Manganese (30 ppm M3 extraction)
- DMI, benzimidazole, and QoI fungicides are effective. Gray leaf spot programs also suppress decline.

Kikuyugrass

- Climate where kikuyugrass is grown in California
- Most destructive diseases
- **Scalping**
- Troublesome insects

Scalping



Scalping



Scalping

Growth regulators and kikuyugrass
La Jolla Country Club
July 26, 1999: 4 weeks after treatment

Primo L, 0.5 oz



No treatment



Proxy, 5 oz



Scalping



**Roots near
crown no
scalping**



**Roots near
crown no
scalping**



No roots near
crown results
in scalping



**No roots near
crown results
in scalping**



Scalping



Kikuyugrass

- Climate where kikuyugrass is grown in California
- Most destructive diseases
- Scalping
- Troublesome insects