

# Bluemuda: Changing the way we grow grass in the Transition Zone

**Dr. Gregg Munshaw**  
**University of Kentucky**  
**@ukturf**

**Brad Nevitt**  
**Advanced Turf Solutions**  
**@Nevitt16**

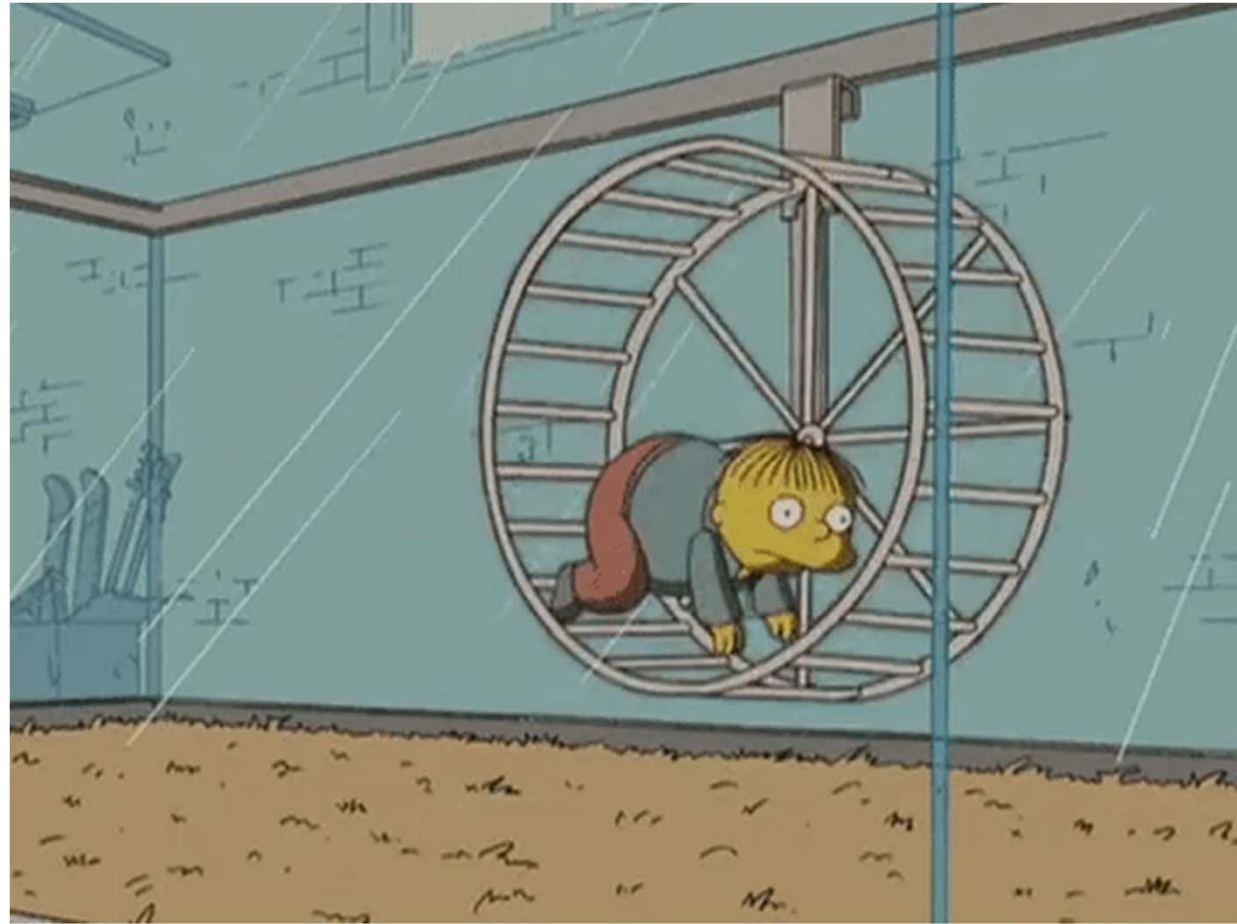






**With traditional overseeding we knew we had a problem to solve....**

Does this make sense for  
us in the transition  
zone???





**2011:**

**Introduction of new varieties changed the level of KB turf performance in the 'Transition Zone'**

**HGT Bluegrass**

**Persistent PR**

**Creeping bentgrass**

- Fast Germ
- Quick establishment / Aggressive
- Traffic tolerant / Quick to recover
- Summer Patch Resistant
- Early Spring Green-up
- Virtually no thatch production
- Competitive with bermudagrass
- A key component to 'Bluemuda' puzzle?

**2012: Bluemuda  
experiment begins!**









Photo taken Jan. 11 (2 months after fertilizing)

Seeding rate

PR vs KBG

VM vs drop

Fertilizer source

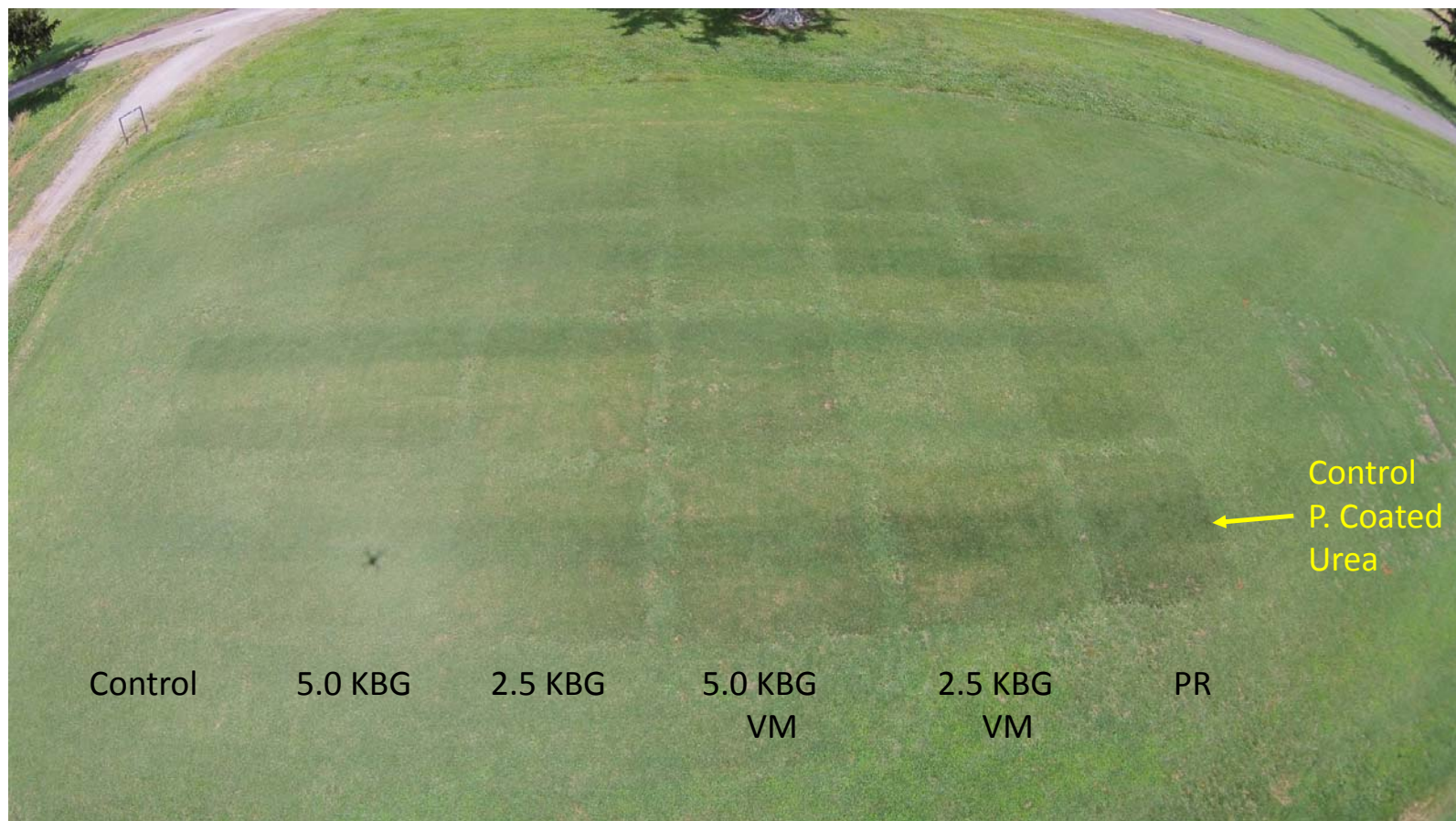


Photo taken June 28 (7 months after initial fertilizing, 8 months after seeding)



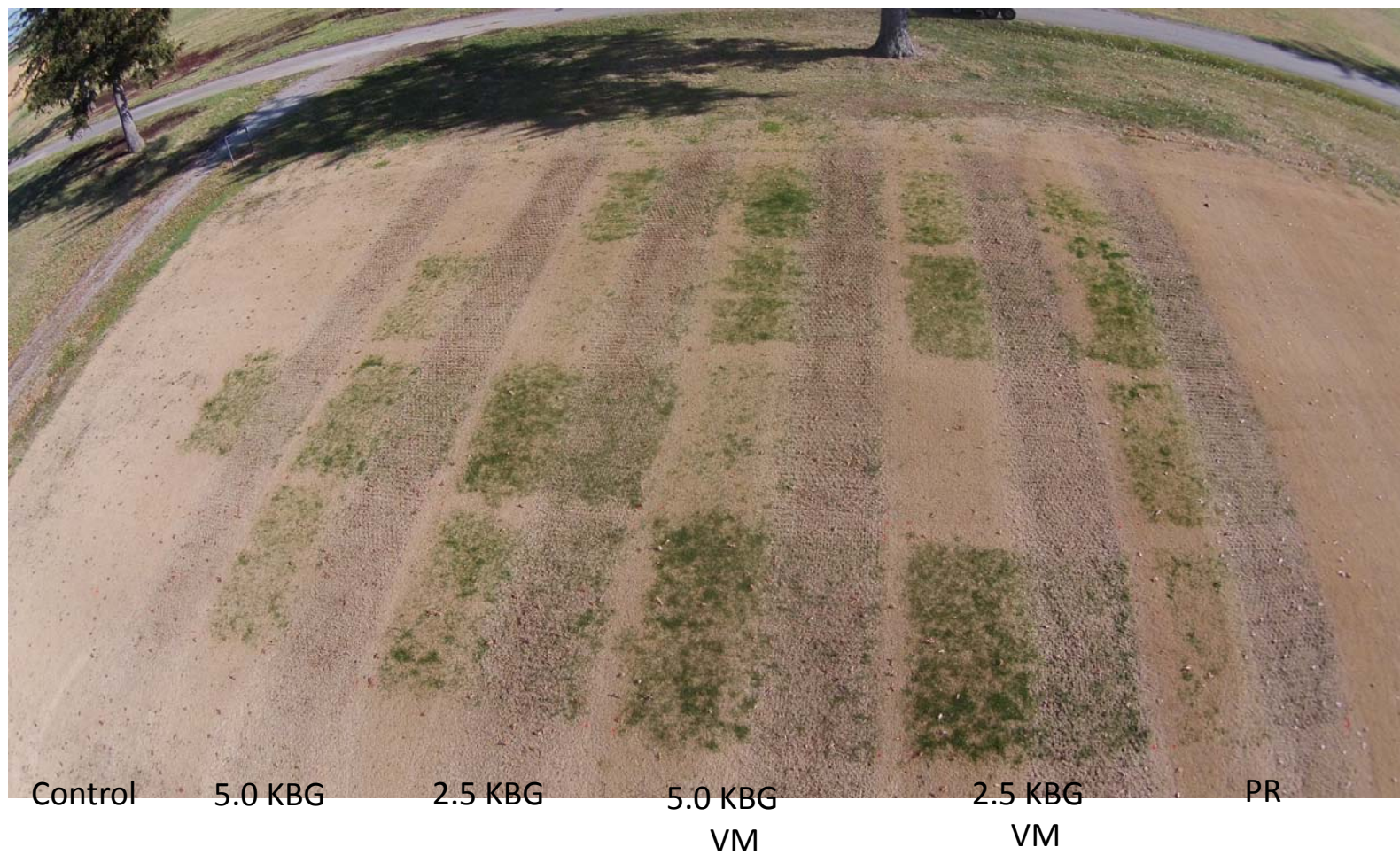


Photo taken Dec. 2 (13 months after initial fertilizing, 14 months after seeding)



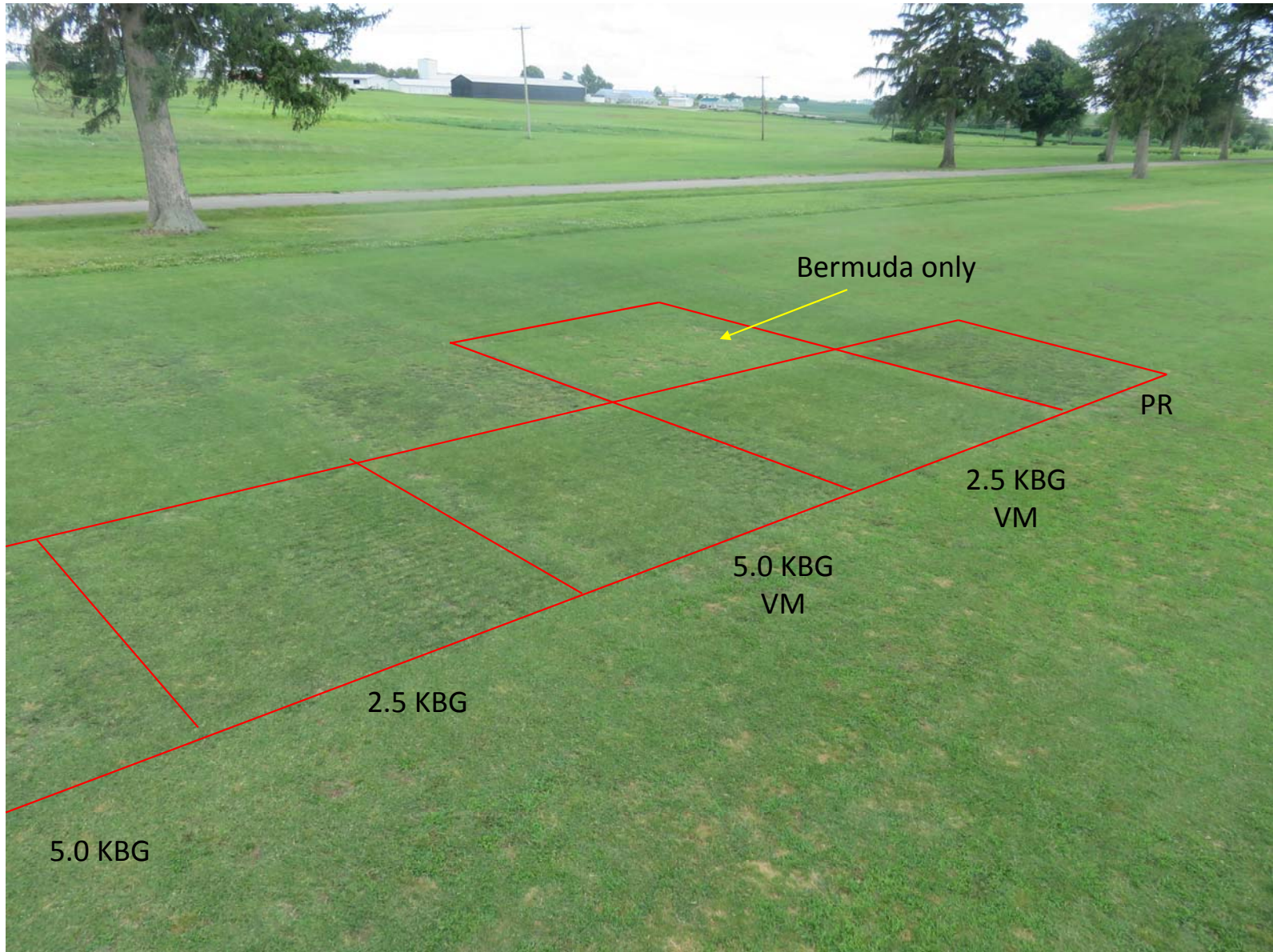
**Gregg Munshaw** @UKTurf · 14 Apr 2017



bermuda (l) & **#bluemuda** (r) got no H<sub>2</sub>O in '16 or fert in fall '16 or spring '17 and were trafficked in fall. Look good for all that abuse!









HGT  
(5 lb /1000 ft<sup>2</sup>)







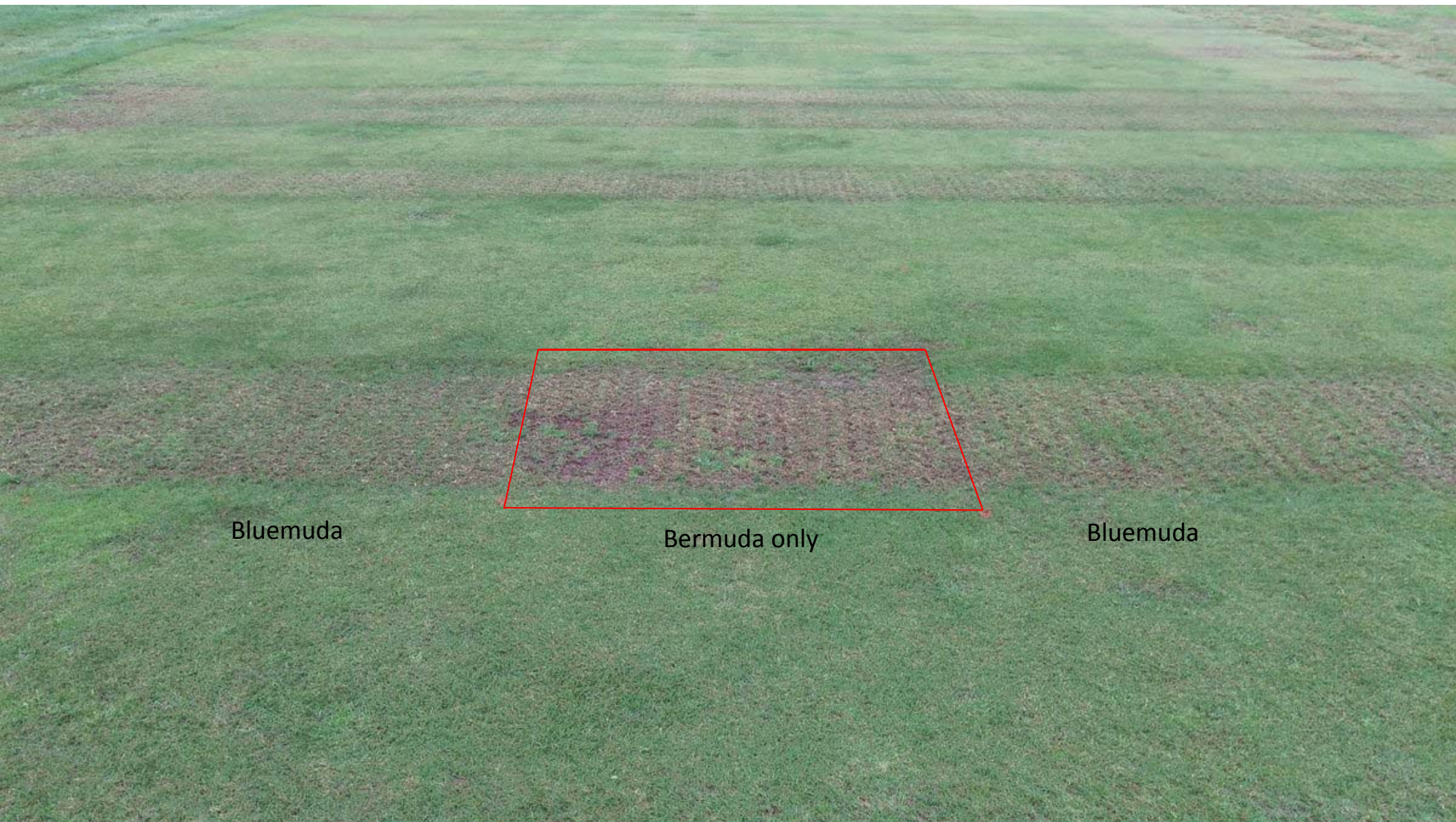
# Brinkman Traffic Simulator











Bluemuda

Bermuda only

Bluemuda





Bluegrasses  
Tall fescues  
Bulbous bluegrass



# Which bluegrass to use?



## Kentucky Bluegrass Classification

*These charts are for general observation only. Individual performance of varieties within each classification may vary widely and require comparative regional test results to determine the best performing variety.*

Compact America	Description	DLF PICKSEED Recommendations	Category	
	<ul style="list-style-type: none"> <li>• Low, compact, high quality turf</li> <li>• Finer leaf, higher density</li> <li>• Moderate winter dormancy</li> <li>• Moderate summer recovery</li> </ul>	<ul style="list-style-type: none"> <li>• <b>Mercury</b> - <b>A-LIST</b>! superior shear strength; excellent drought tolerance; fast germination; Rust and Leaf Spot resistant; excellent wear recovery</li> <li>• <b>Amada</b> - fast germination and establishment</li> </ul>	Apollo Bedazzled BlueNote BlueRidge	Mystere Oasis Shiraz SR2284*

Shamrock	Description	DLF PICKSEED Recommendations	Category		
	<ul style="list-style-type: none"> <li>• Aggressive lateral growth</li> <li>• High shoot density</li> <li>• Very wear tolerant</li> <li>• Quickly knit sod and repair</li> <li>• May predominate in blend</li> <li>• Variable in other characteristics</li> </ul>	<ul style="list-style-type: none"> <li>• <b>Fielder</b> - (SPTR 2959) – American Shamrock. Excellent winter color and early spring green-up, excellent traffic tolerance, rapid establishment, superior summer performance</li> </ul>	Arrowhead ARC Atlantis Bonaire Brooklawn Champagne Durham Gaelic	Guinness Lakeshore Mongoose Moonshine Parkland Rockstar Rubix Shamrock	SR 2100* SR 2150* Volt Wildhorse Zinger

- Long winter dormancy
- Many are susceptible to Stem and Leaf Rust

- **Rhythm** - dark green, heat tolerant, low stemminess, Summer Patch resistant, high density, low mow, wear tolerant

Blueberry  
Everest  
Everglade  
Excursion  
NuGlade  
Odyssey  
Perfection  
Quantum Leap\*

Compact	Description	DLF PICKSEED Recommendations	Category	
	<ul style="list-style-type: none"> <li>• Low, compact growth</li> <li>• High quality turf</li> <li>• 1/2" cutting height</li> <li>• Excellent resistance to Leaf Spot</li> <li>• Long winter dormancy</li> <li>• Variable under summer stress</li> <li>• Often purple winter color</li> </ul>	<ul style="list-style-type: none"> <li>• <b>Heidi</b> - <b>A-LIST</b>! (A00-2882) darkgreen, superior turf quality, wear tolerant, drought tolerant, early spring green-up</li> </ul>	Baronie Bewitched Blackstone Blue Sapphire Hallmark Hampton Wildwood	

Compact Mid-Atlantic



# What about annual bluegrass?



Xonerate 2SC  
2 apps 6 oz/A  
200 GDD



# Benefits I've Witnessed...

- Improved year-round color
- Traffic tolerance
- Reduced recovery time
- Spring cover
- Increased density
- Reduced fungicides (over KBG alone)
- Ability to stripe
- Cheaper than overseeding





# Future Research/Concerns

- Quicker establishment
  - TF?
- Fall cover
- KBG → bluemuda
- Weed control





# On The Course!

- Transition vs No Transition
- Aesthetics
- Disease/Poa/other weeds
- Cultural/Chem/Fert
- Costs



## Transition vs No Transition

- Winter/Spring
  - Annual/P. Rye
  - Dormancy
- 
- No Transition
  - Year Round Turf



## Battlefield Golf Course, Richmond, KY

































On The  
Course!

- Disease/Poa/other weeds





- Poa Control
- Xonerate
- Paclobutrazole







# On The Course

- Cultural/Chem/Fert





- 
- HOC= .75"-1"
  - Mowing Patterns
  - Aerification – move up or back
  - Verticut-if possible



# Chem/Fert

---

- Fert-Spring/Fall, summer slow release/foliar
- PGR's
- Fungicides



On The  
Course!

- Costs

# Cost!

- Already Overseed? Little to no increase in cost of seed or program.
- Don't Overseed-only initial seed cost then little to no increase
- \*Reseed





March 1, 2018



February 26, 2018











# Contact Us!

Gregg Munshaw

gcmunshaw@uky.edu

@ukturf



Brad Nevitt

[bnevitt@advancedturf.com](mailto:bnevitt@advancedturf.com)

@nevitt16

