

Drones on Your Course Without all the Hype

Thomas Bastis, CGCS
@calsuper
tbastis@me.com



A man with short brown hair, wearing a light blue polo shirt and khaki pants, stands on a green golf course. He is holding a small white model airplane with red and black details. The background features a line of dark green trees under a clear blue sky with some light clouds. The text 'TurfNetTV' is overlaid in a large, bold, yellow font across the center of the image.

TurfNetTV

always one step ahead...









Camera Movements



Follow - From far away



Follow - Close



Hover - High



Hover - Close



360 - Far away



360 - Close



Slide sideways - From right



Slide sideways - From left



Slide in - Towards me



Slide out - From me



Fly in - Downwards



Best Value





Editors Pick







Ready to Go (GPS)

P-GPS



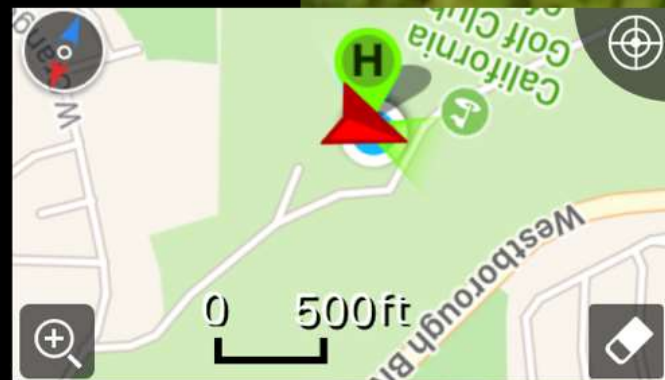
95%

4.26V



ISO	SHUTTER	EV	WB	SD	CAPACITY
100	1250	+0.0	Auto	N/A	0

AE



D 7.4 FT H 0.0 FT

H.S 0.0 MPH V.S 0.0 MPH 18 FT





MODE

P-GPS



No signal



91%



--/--

ISO 800

1/12.5 EV 0

1,475

JPEG

AE



Overall Status



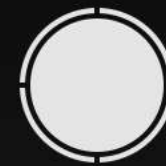
Deserializer disconnected



Hardware malfunction: Contact DJI Support to arrange for repairs



Fn

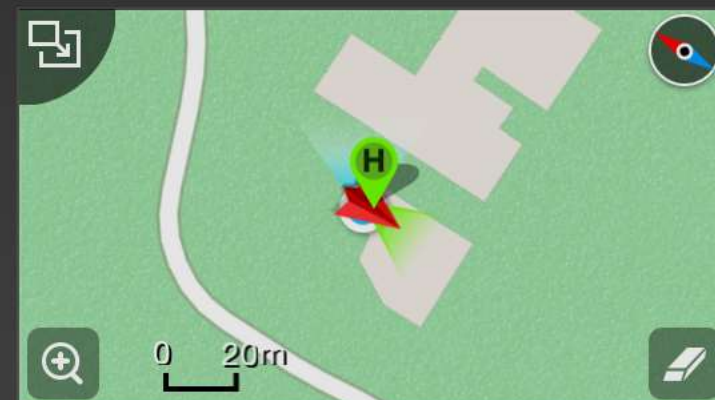


H: 0.0 M

D: 0.6 M

V.S
0.0 M/SH.S
0.0 M/S

0.1 M



Justify the Drone

Chemical or Product Trials

Untreated

Treated





Xon. 1.2oz/1000sq.ft.

Xon. .65grams/1000sq.ft.

Meth. 3.6oz.

Meth. 2.4oz.

Meth. 1.2 oz.

Methiozolin .6oz/m
3gal h2o carrier
2 week interval



60.0000



60.0000

A scenic view of a golf course under a clear blue sky. In the foreground, a large, leafless tree with a complex branch structure stands prominently. To its right, a smaller, denser evergreen tree is visible. The middle ground shows a lush green golf course with a small pond or water hazard on the left. In the distance, a yellow flag is visible on a green, and a range of mountains stretches across the horizon. The text "Tree Evaluations" is overlaid in the center of the image.

Tree Evaluations





Shade







Selective tree removal

Shade Impact
9:30am

An aerial photograph of a golf course. The image shows several green fairways, sand traps (bunkers), and a central area with trees and grass. Four irregular areas of grass are outlined in yellow, indicating native grass. The text "Native Grass" is overlaid in white on the central part of the image.

Native Grass

New path

Channel drainage

Project Planning

Enhanced staging area

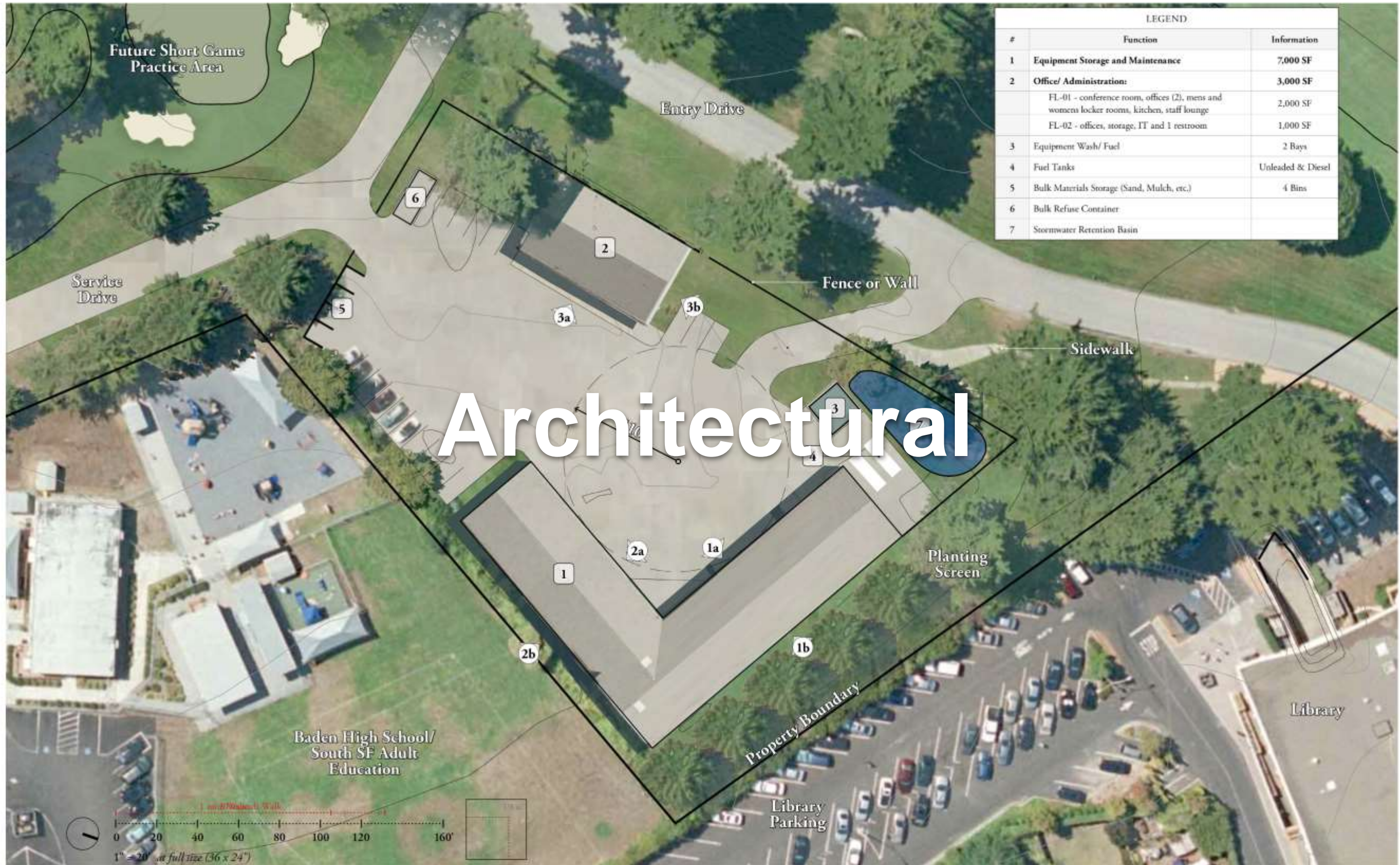




Additional tee

Extra outside
rotterra pass either
side to blend

Eliminate cart path
11 x 1005



An aerial photograph of a residential neighborhood. At the top, a paved road with yellow lane markings runs horizontally. Below the road, several houses with various roof colors (brown, grey, white) are visible, interspersed with green lawns and trees. A dense line of green trees runs horizontally across the middle of the image. Below the trees, a road with a red-paved shoulder curves from the bottom left towards the right. The text "Property Line" is overlaid in white, bold, sans-serif font across the middle of the image, positioned over the dense line of trees.

Property Line

Lake Evaluation

An aerial photograph of a golf course. In the center, there is a large, dense pile of cut grass, likely from a recent maintenance operation. The surrounding area is green grass, with some shadows cast by trees or structures off-camera. To the right, there is a curved concrete path or fairway edge. The text "Lake Evaluation" is overlaid in white, bold font across the center of the image.

An aerial photograph of a golf green. The green is a light green color and features a grid pattern of darker green squares, likely representing different experimental plots. The grid is composed of several rows and columns of squares. The green is surrounded by a darker green border, and there are some shadows from trees visible at the top and right edges. The text "NTEP Trials" is overlaid in the center of the green in a white, bold, sans-serif font.

NTEP Trials

Lake Construction



Greens Construction



Construction Progress



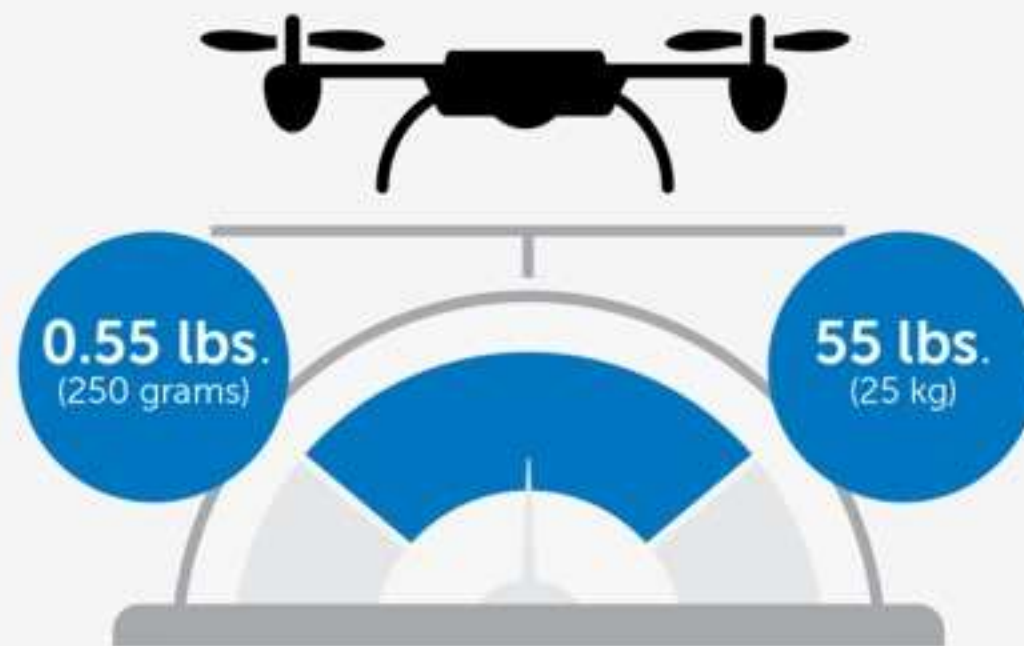
Regulations?

sUAS 14 CFR Part 107



Do I need to register my Unmanned Aircraft?

You need to register your aircraft if it weighs between **0.55 lbs.** (250 grams) and up to **55 lbs.** (25 kg)



You will be subject to civil and criminal penalties if you meet the criteria to register an unmanned aircraft and do not register.

	Fly for Fun	Fly for Work
Pilot Requirements	No pilot requirements	Must have Remote Pilot Airman Certificate Must be 16 years old Must pass TSA vetting
Aircraft Requirements	Must be registered if over 0.55 lbs.	Must be less than 55 lbs. Must be registered if over 0.55 lbs. (online) Must undergo pre-flight check to ensure UAS is in condition for safe operation
Location Requirements	5 miles from airports without prior notification to airport and air traffic control	Class G airspace*
Operating Rules	Must ALWAYS yield right of way to manned aircraft Must keep the aircraft in sight (visual line-of-sight) UAS must be under 55 lbs. Must follow community-based safety guidelines Must notify airport and air traffic control tower before flying within 5 miles of an airport	Must keep the aircraft in sight (visual line-of-sight)* Must fly under 400 feet* Must fly during the day* Must fly at or below 100 mph* Must yield right of way to manned aircraft* Must NOT fly over people* Must NOT fly from a moving vehicle*
Example Applications	Educational or recreational flying only	Flying for commercial use (e.g. providing aerial surveying or photography services) Flying incidental to a business (e.g. doing roof inspections or real estate photography)
Legal or Regulatory Basis	Public Law 112-95, Section 336 – <i>Special Rule for Model Aircraft</i> FAA Interpretation of the Special Rule for Model Aircraft	Title 14 of the Code of Federal Regulation (14 CFR) Part 107

Pop Quiz!

[Exit Quiz](#)

3 of 73

[Grade](#)

QUESTION

Which preflight action is specifically required of the pilot prior to each flight?

ANSWER CHOICES

- ☐ Check the aircraft logbooks for appropriate entries.
- ☐ Assess the operating environment including local weather conditions, local airspace and any flight restrictions, the location of persons and property on the surface, and other ground hazards.
- ☐ Visually inspect the pilot certificates of all crew members.

[Explanation](#)[Prev](#) [Next](#)



Unmanned Aircraft System C...

Regulations

73 questions



National Airspace System

80 questions



Weather

66 questions



Loading and Performance

28 questions



Operations

67 questions



The Future...

Today!

Full-Service Providers



EYEON18



GREENSIGHT
AGRONOMICS



<https://eyeon18.com>



<http://greensightag.com>

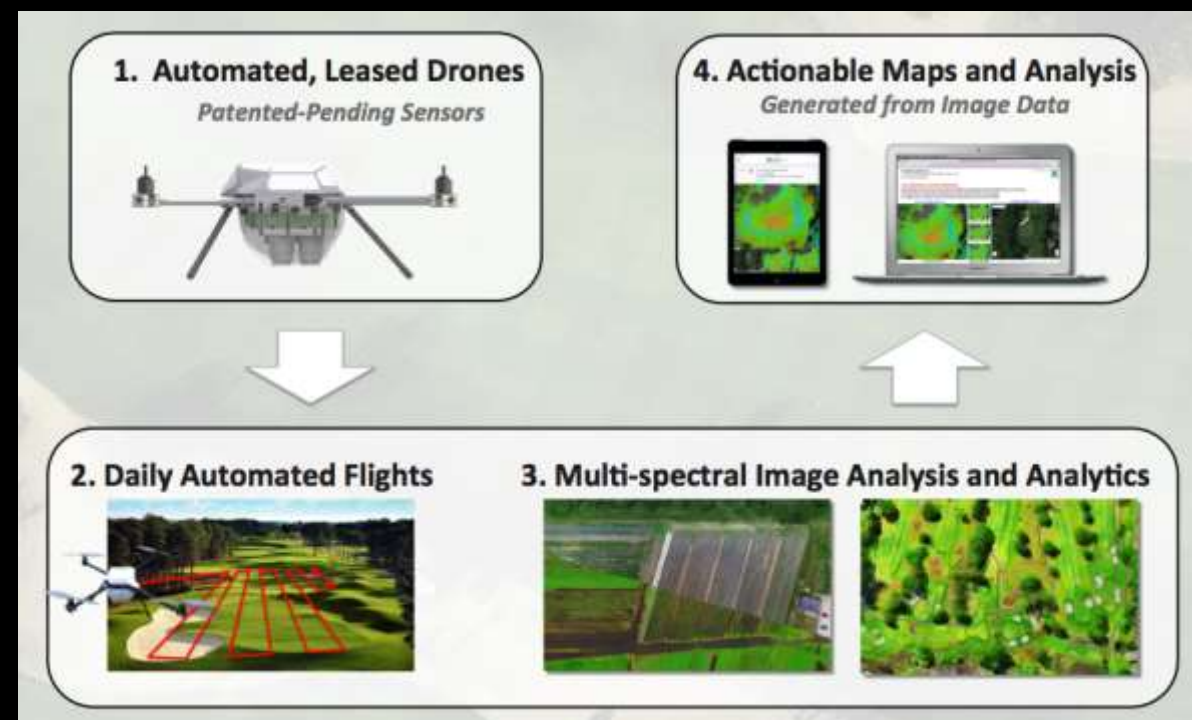


EYEON18

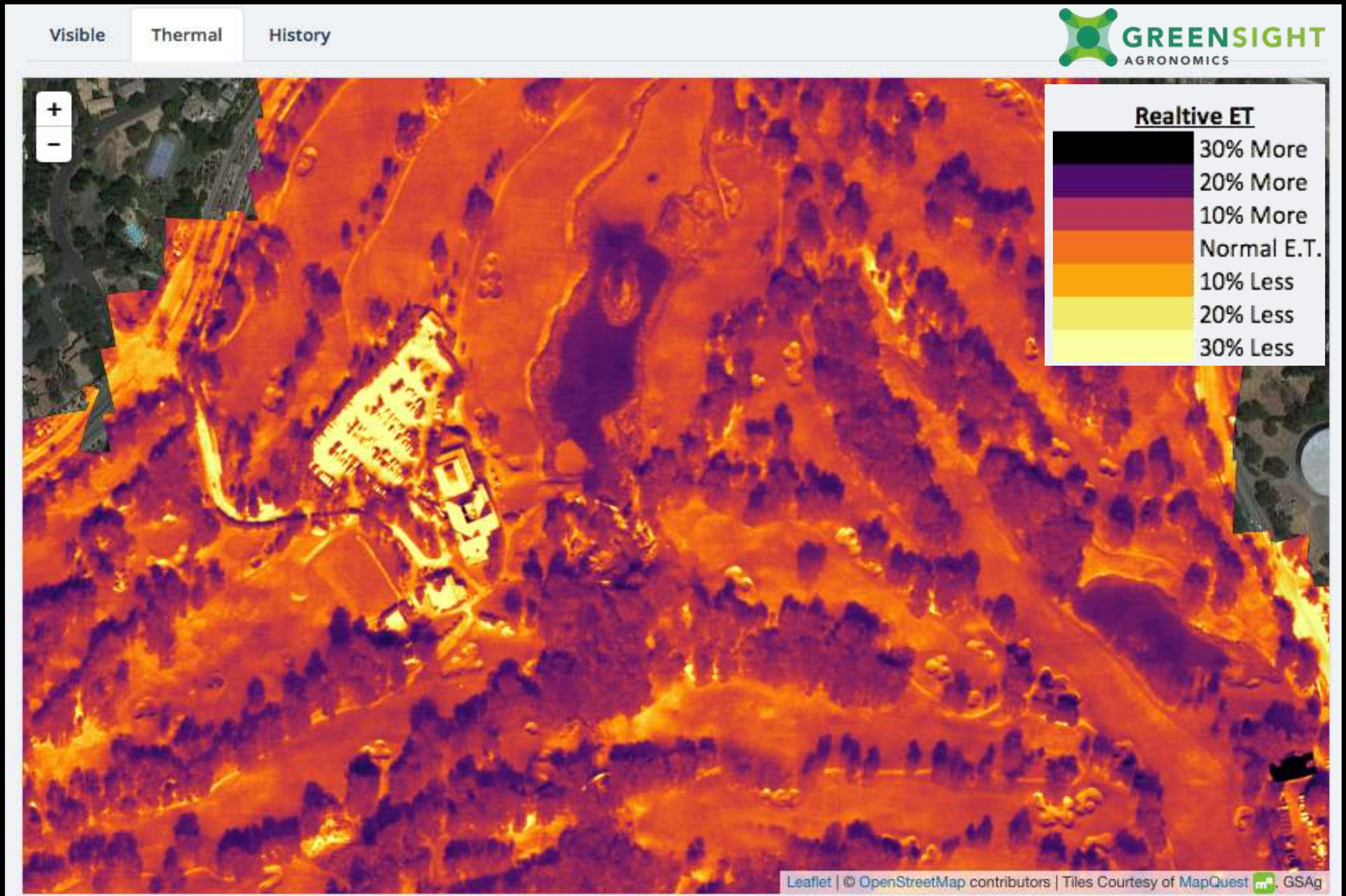


GREENSIGHT AGRONOMICS

Sophisticated Command and Control Behind the Scenes



Advanced Data Products



3D Terrain Mapping

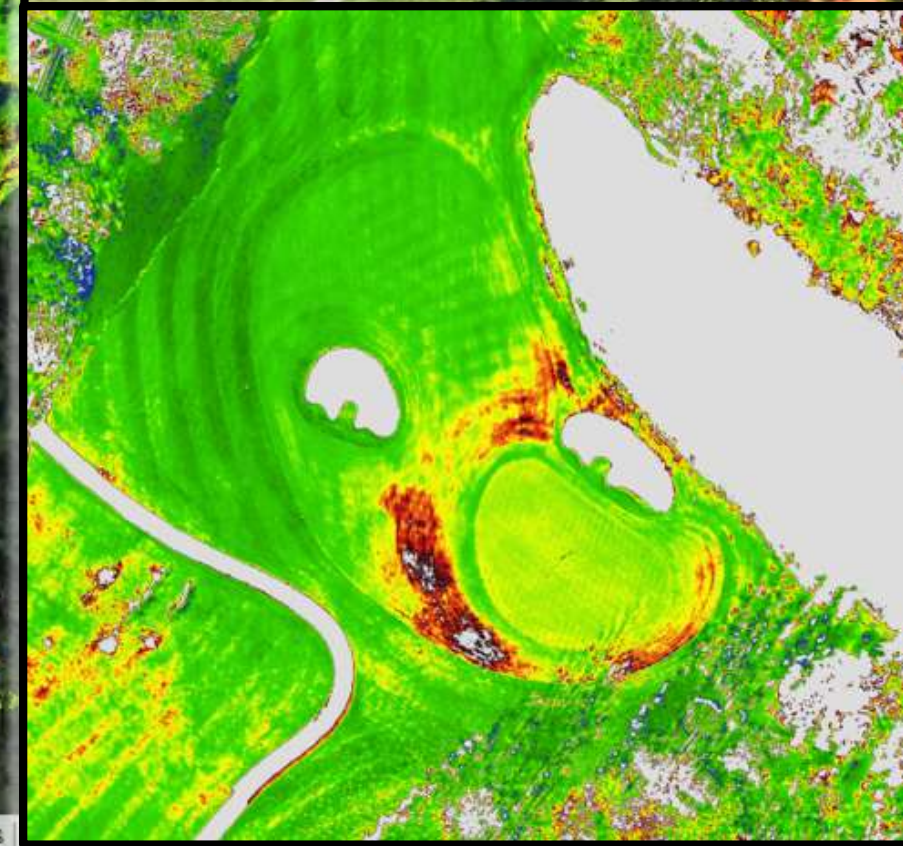
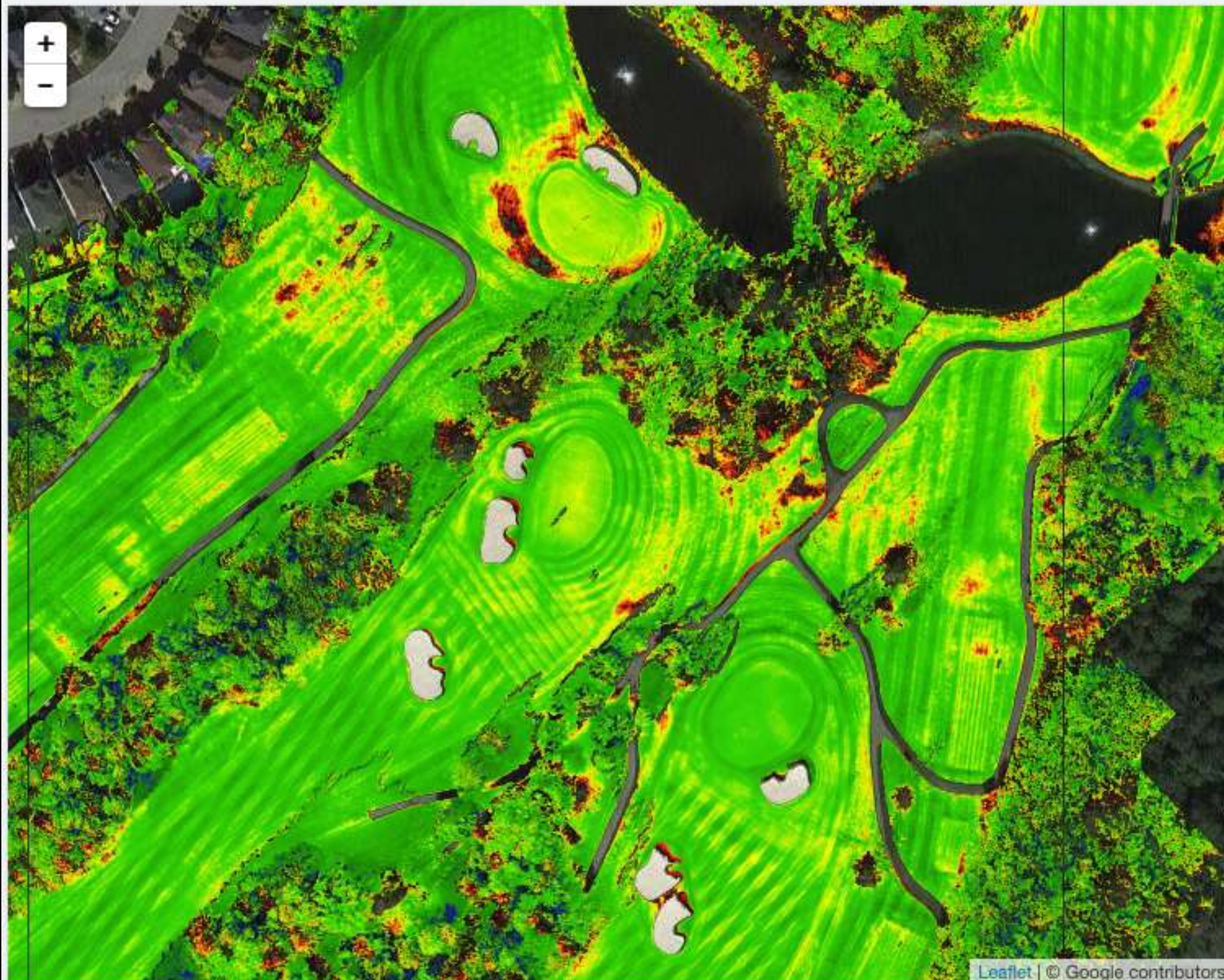


Relative Turf Health Index



NDVI: Normalized Difference Vegetative Index
Near-Infrared Cameras to Detect Chlorophyll

Visible Near IR Red Edge Thermal Beta GSNDVI History



Leaflet | © Google contributors

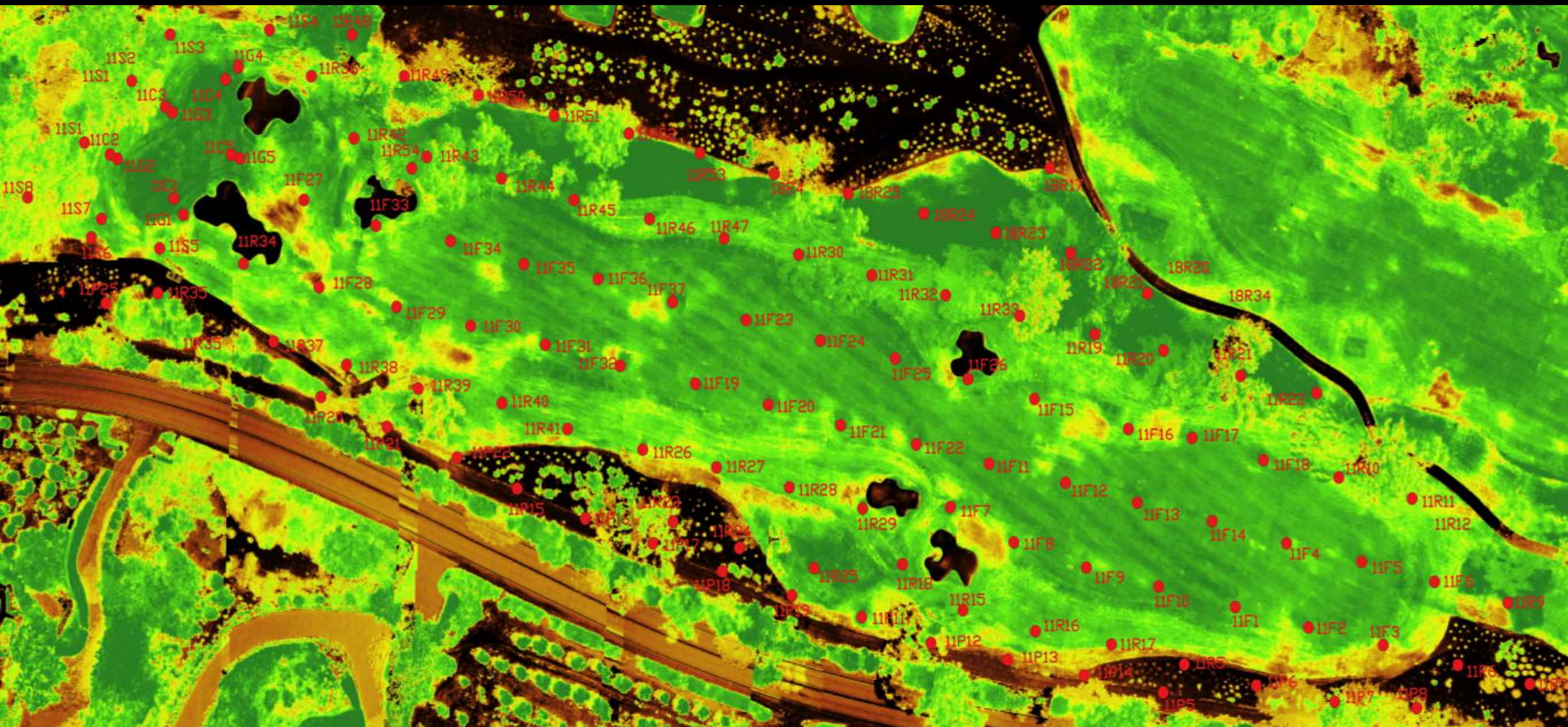
Feature Mapping



Relative Turf Health Index



NDVI: Normalized Difference Vegetative Index
Near-Infrared Cameras to Detect Chlorophyll





*Take
aways...*

Register your drone

Get licensed

Be safe

@Calsuper

Thank You

YouTube



Thomas Bastis
tbastis@me.com