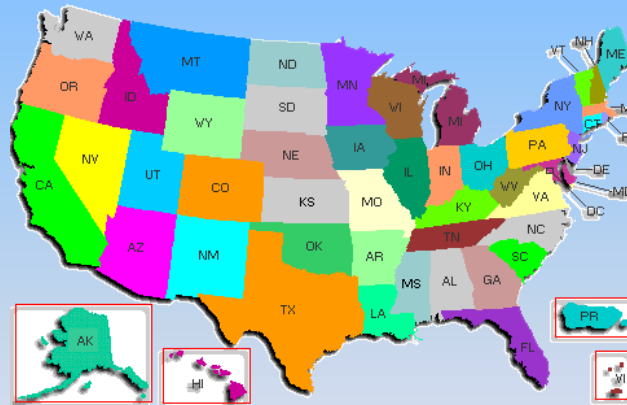


Think Differently!



What does all this have in common?



The PROBLEM is



INCONSISTENT DIRECTION!!!!!!



Why this? Why now?

Many issues are facing golf courses today. How can we be green and profitable and what resources are out there to help that you just don't know about? Your profession needs to look outside the normal channels to see what else can work to address our needs.



Local to International Concerns Facing Golf Courses

- ❖ Confusion
- ❖ Activists
- ❖ Misunderstanding of what “Green” means
- ❖ Safety
- ❖ Government Involvement
- ❖ Environmental Issues
- ❖ Economic Stability

**ARE YOU READY
TO THINK
DIFFERENTLY?**



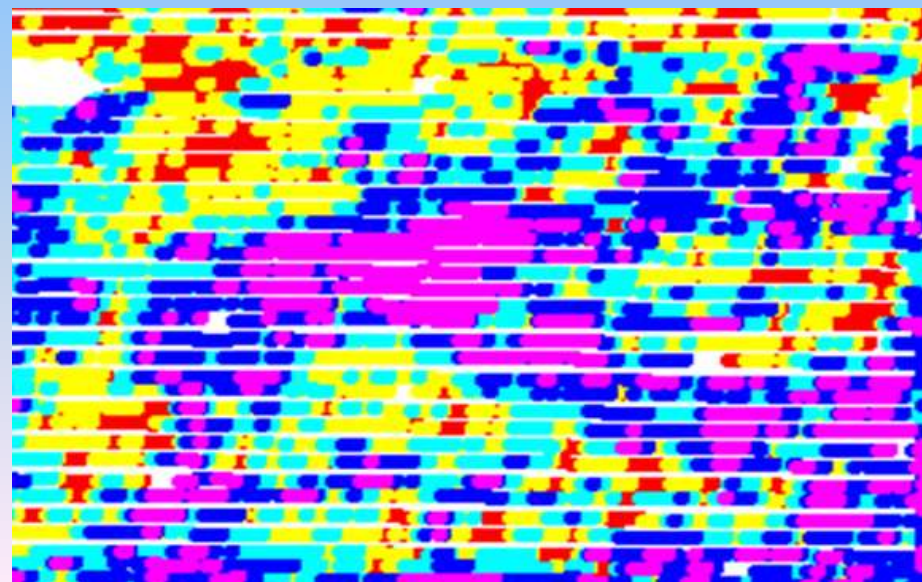
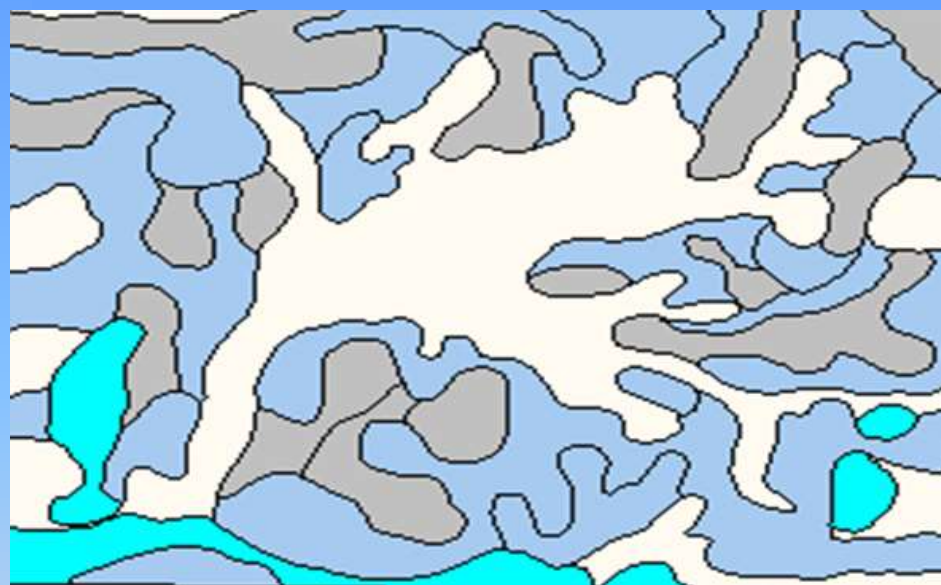
At this conference there
are how many people
here just like you

????????



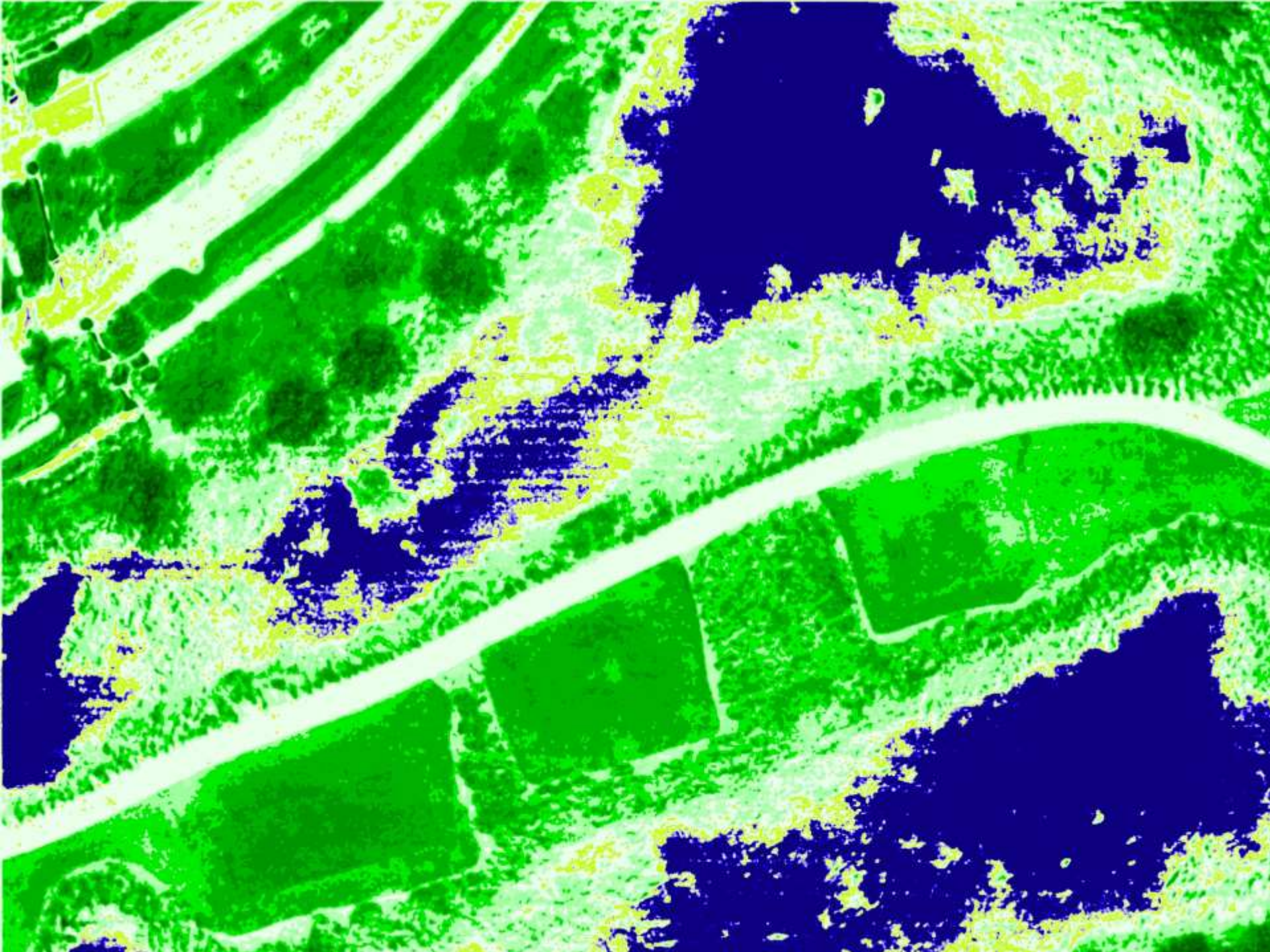


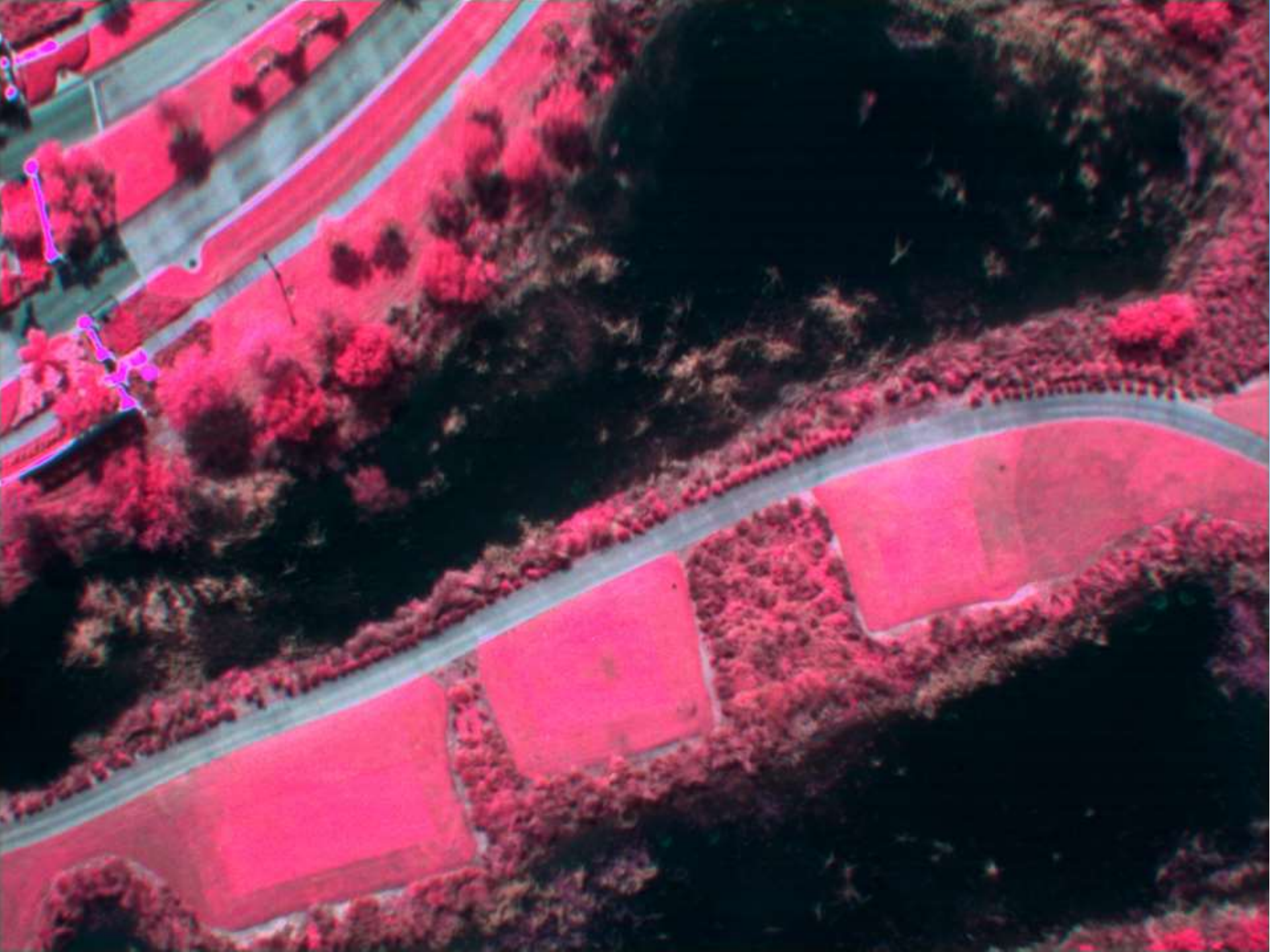












**What might the results
from this possibly tell
us?**



Central Florida Soil Laboratory

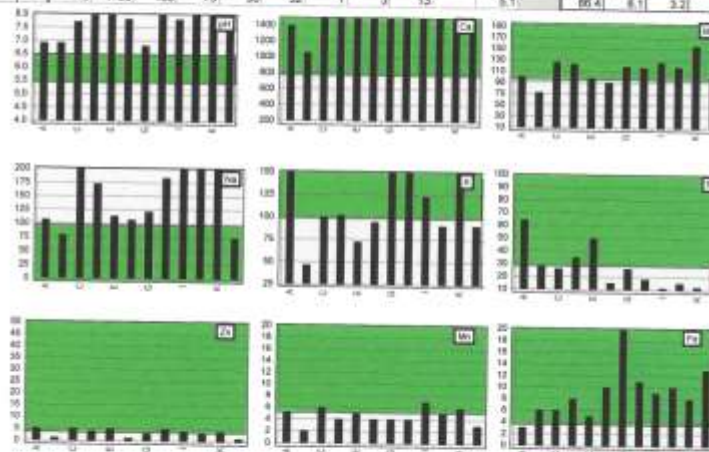
P.O. Box 2508
Bartow, Florida 33831
(883) 533-6679

Soil

Duren Golf Club
7032 Stadium Pkwy
Viera, FL 32940

Date Received: 10/21/13
Date Reported: 10/22/13

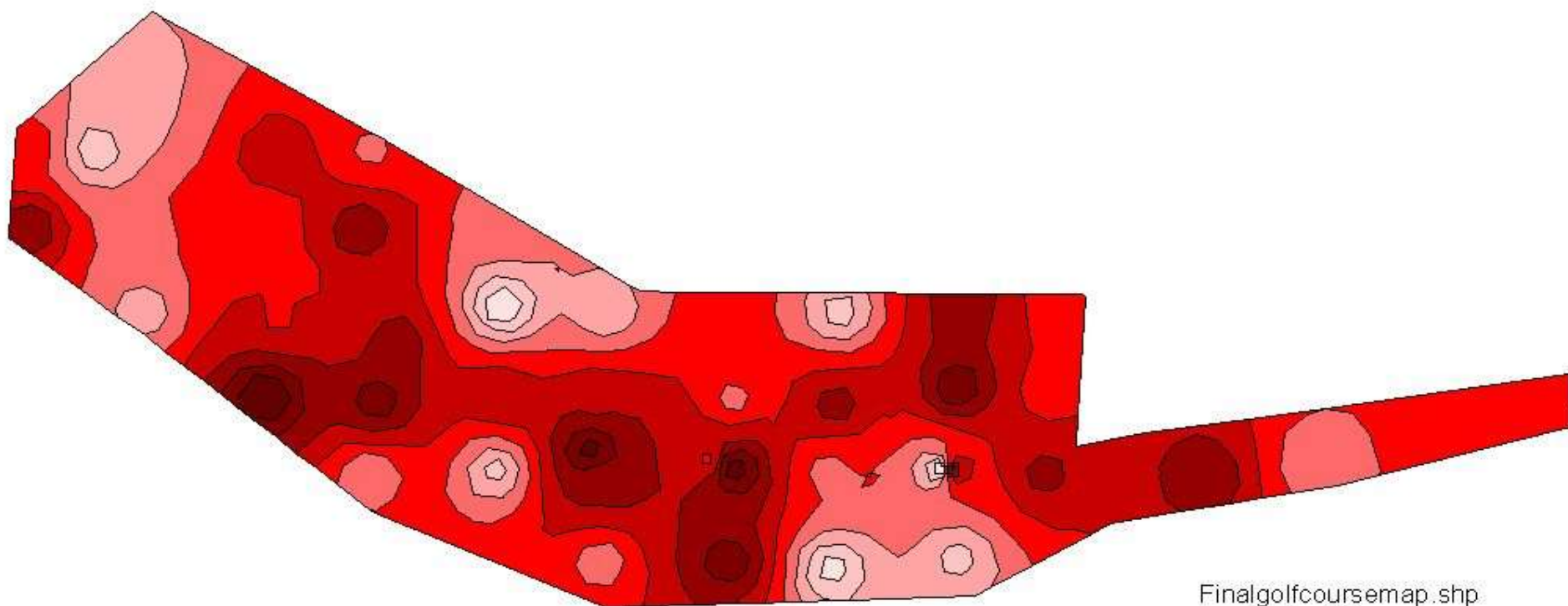
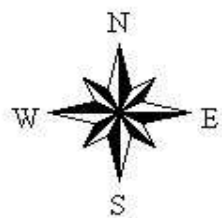
I.D.		pH	Ca	Mg	Na	K	P	Zn	Mn	Fe	C.E.C.	Calculated Base Saturation (%)			
												Ca	Mg	Na	K
Green	A	6.9	1350	100	100	171	64	3	3	3	4.3	80.1	9.5	5.3	3.1
Tee 3	B	6.9	1050	71	79	48	28	1	2	6	3.1	80.4	9.3	5.5	1.9
F 5 C	C	7.7	12240	126	250	100	26	5	6	6	31.7	98.2	1.6	1.5	0.4
F 7 C	D	8.2	7410	123	172	102	35	4	4	8	19.5	94.8	2.6	1.5	0.7
F 32	E	6.2	5610	95	113	72	30	5	5	5	15.2	85.1	2.6	1.6	0.6
1	F	7.8	7340	90	106	94	15	1	4	10	19.0	86.2	1.9	1.2	0.6
2	G	6.5	4480	119	121	220	30	5	4	22	12.2	81.5	4.0	2.2	2.4
3	H	6.0	9150	117	183	183	18	6	4	11	25.9	85.4	2.0	1.7	1.0
4	I	7.8	17290	126	413	123	11	4	7	9	44.7	95.5	1.2	2.0	0.4
5	J	8.1	13080	118	289	90	15	3	5	10	33.6	95.4	1.4	1.9	0.3
6	K	8.2	13670	156	282	154	12	4	6	6	35.6	95.9	1.8	1.7	0.6
7	L	7.8	17590	100	75	90	32	1	3	15	5.1	86.4	6.1	3.2	2.3



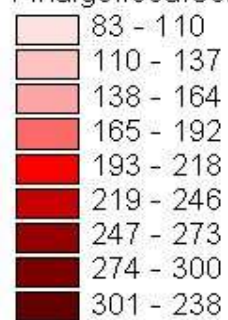
Analysis is reported as AVAILABLE POUNDS PER ACRE.
The above have been extracted with Ammonium Acetate, pH 4.8

These ranges are general guidelines. Tissue samples should be taken to establish individual base-line.

Respectfully submitted,
Dennis Mosley



Finalgolfcoursemap.shp





- 1) Nematodes
- 2) Sub Surface Black layer
- 3) No Irrigation
- 4) Poor Drainage
- 5) Dollar weed
- 6) Mole Crickets

**Do you know that there are
over 2.24 Million acres of land
on golf facilities in the U.S. and
1.5 million acres of maintained
turf grass alone?**



Often you are viewed as the “Green Leaders” as to how people’s lawns should look!

So “Think Differently” and look around for those solutions to issues you don’t even know exist yet!



You've invested thousands of dollars...



...don't let this be the return on your investment.



**Does this have you
thinking differently
now?**

